



UBS GWM CIO Global Investment Management – UBS Wealth Way Solutions

Approved Distribution: US
UBS Financial Services Inc.

For educational and marketing purposes

Asset allocation: Risk and return

An analysis of historical and forward-looking statistics

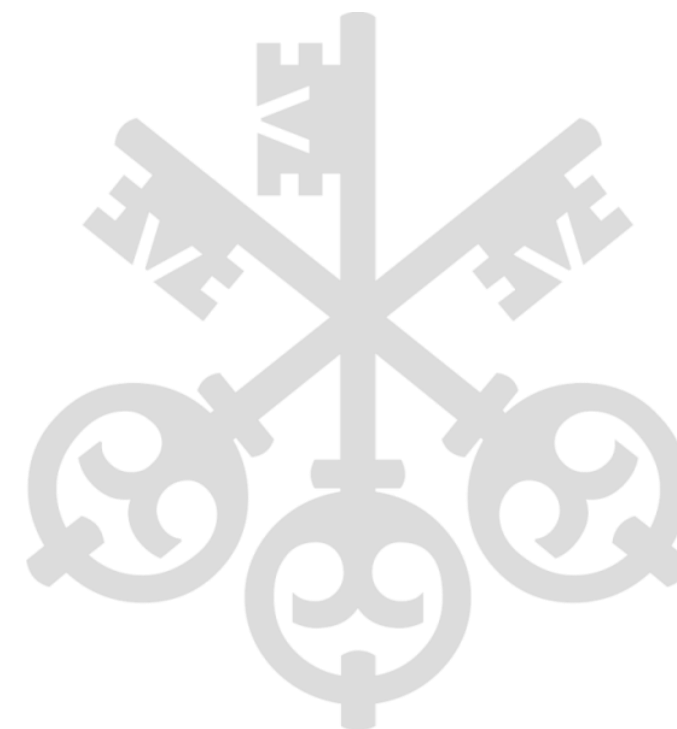
13 February 2026

Justin Waring, APMA®, CFP®

Head UBS Wealth Way Strategy & Solutions, UBS CIO Global IM

**This educational report has been prepared by UBS Financial Services, Inc.
Please see important information and disclosures at the end of the document.**

The authors of this marketing document transitioned from CIO Research to Global Investment Management on 1 July 2025. This document constitutes sales and education content, not a research report, and it is not developed or held to the standards applicable to independent research. This document may include references to previous Research publications by the authors.



Introduction

- Asset allocation—the mix of stocks and bonds—strongly shapes long-term return potential and investment risk.
- Historically, portfolios with higher return potential have faced deeper drawdowns, longer recovery periods, and greater uncertainty—especially over short time periods.
- Understanding the trade-off between risk and return is key to setting expectations and aligning portfolios with goals and risk tolerance.
- By reviewing the history of portfolio mix, growth, and time horizon, this presentation aims to help investors decide the right level of risk to take for meeting long-term objectives.

// If you want higher returns, you have to accept higher risk. There's no free lunch.

Harry Markowitz

// In investing, what is comfortable is rarely profitable.

Robert Arnott

Asset allocation risk and return statistics

Historical statistics, US stock/bond portfolios, Dec 1925 – Jan 2026

Asset allocation (stocks/bonds)	Historical risk and return		Largest positive		Largest negative		Percentage of		
	Annual return (compound)	Annual risk (standard deviation)	12-month return	12-month return end date	Lowest 12-month return	Lowest 12-month return end date	Negative 12-month returns	Positive 12-month returns	12-month returns greater than inflation
100% / 0%	10.5%	18.5%	163%	Jun-33	-68%	Jun-32	24%	76%	71%
90% / 10%	10.1%	16.7%	145%	Jun-33	-63%	Jun-32	23%	77%	71%
80% / 20%	9.6%	14.9%	127%	Jun-33	-58%	Jun-32	22%	78%	71%
70% / 30%	9.2%	13.1%	110%	Jun-33	-53%	Jun-32	21%	79%	72%
60% / 40%	8.6%	11.4%	94%	Jun-33	-47%	Jun-32	19%	81%	72%
50% / 50%	8.1%	9.7%	78%	Jun-33	-41%	Jun-32	18%	82%	72%
40% / 60%	7.5%	8.0%	63%	Jun-33	-34%	Jun-32	15%	85%	72%
30% / 70%	6.9%	6.5%	48%	Jun-33	-26%	Jun-32	13%	87%	73%
20% / 80%	6.2%	5.3%	34%	Jun-33	-18%	Jun-32	10%	90%	73%
10% / 90%	5.5%	4.5%	29%	Mar-86	-14%	Oct-22	8%	92%	70%
0% / 100%	4.8%	4.4%	30%	Sep-82	-14%	Oct-22	12%	88%	64%

Asset allocation risk and return statistics

Historical and forward-looking risk and return statistics, US stock/bond portfolios, Dec 1945-Jan 2026

Historical risk and return			Expected risk and return (Equilibrium Capital Market Assumptions)		Bear market statistics			
Asset allocation (stocks/bonds)	Annual return (compound)	Annual risk (standard deviation)	Annual return (compound)	Annual risk (standard deviation)	Average drawdown	Average time under water (months)	Worst drawdown	Longest time under water (months)
100% / 0%	11.4%	14.5%	8.2%	16.9%	-32%	34	-51%	74
90% / 10%	10.8%	13.1%	8.0%	15.1%	-29%	33	-46%	73
80% / 20%	10.3%	11.7%	7.6%	13.4%	-25%	31	-41%	65
70% / 30%	9.7%	10.4%	7.3%	11.7%	-22%	29	-36%	59
60% / 40%	9.1%	9.1%	6.9%	10.1%	-19%	27	-30%	50
50% / 50%	8.5%	7.8%	6.5%	8.6%	-15%	20	-24%	40
40% / 60%	7.8%	6.7%	6.0%	7.2%	-11%	15	-17%	30
30% / 70%	7.2%	5.7%	5.5%	6.0%	-8%	12	-16%	31
20% / 80%	6.5%	5.0%	5.0%	5.3%	-5%	11	-15%	33
10% / 90%	5.8%	4.6%	4.4%	5.2%	-3%	9	-14%	45
0% / 100%	5.1%	4.8%	3.8%	5.7%	-2%	7	-15%	54*

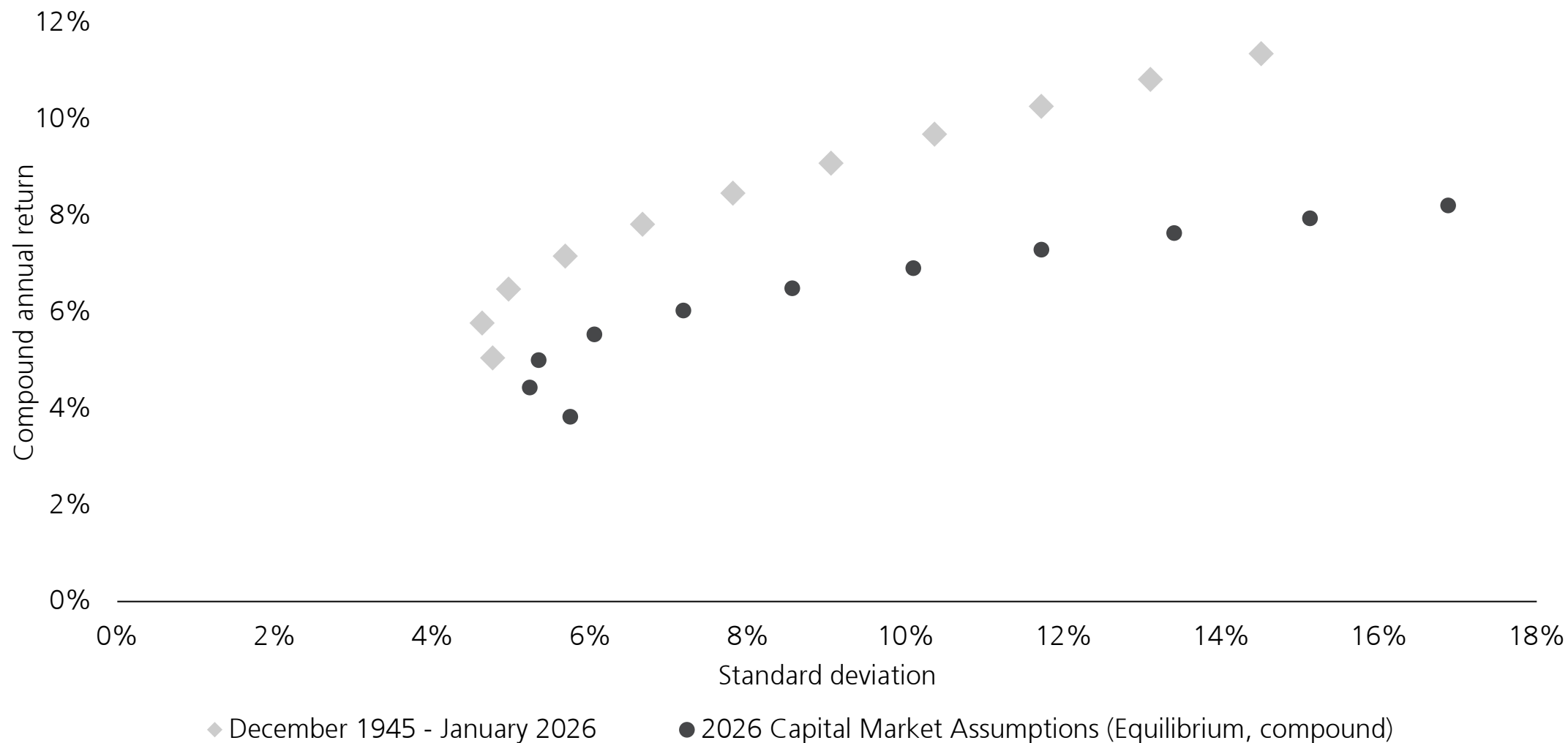
Source: Morningstar Direct, Bloomberg, UBS as of as of 31 January 2026. Historical analysis based on monthly total return data for US large-cap stocks (SBBI US Large Stock Total Return Index) and intermediate US government bonds (SBBI US Intermediate-Term Government Bond Total Return Index).

Expected return and volatility are based on the 2026 UBS Equilibrium Compound Capital Market Assumptions for portfolios invested in intermediate US government bonds and US large-cap stocks.

* US government bonds have not yet recovered their losses from the decline that started in 2020, so this is an estimate.

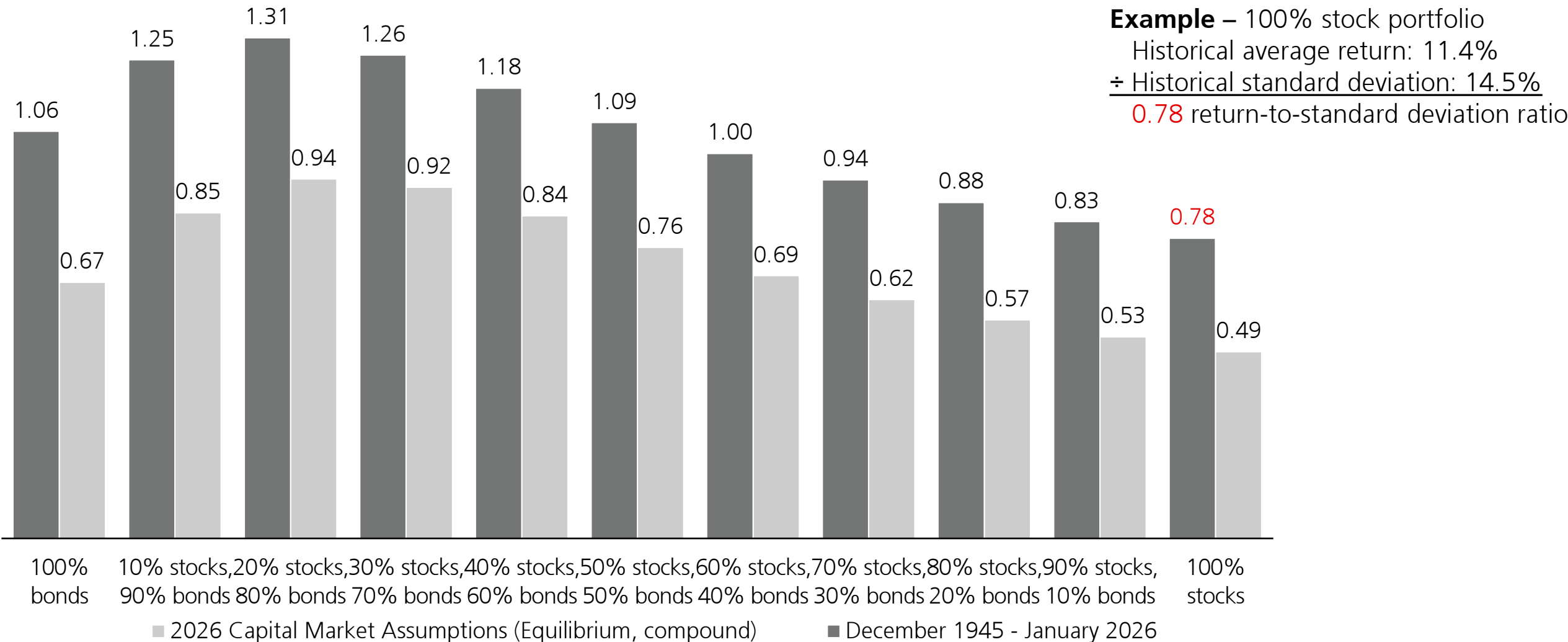
Future returns may be **lower**, with **higher volatility**, than past returns

Historical and forward-looking risk and return statistics, US stock/bond portfolios



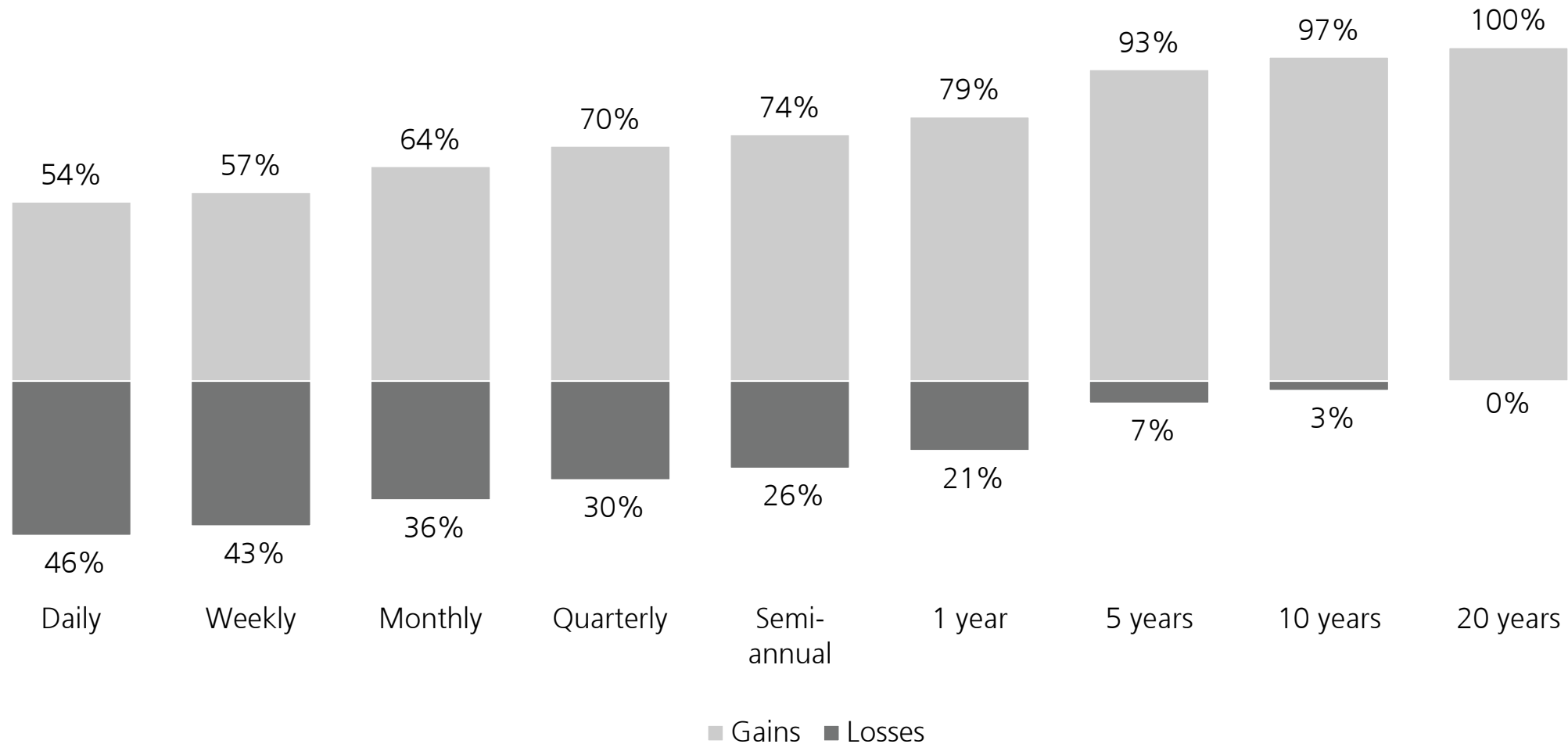
Diversification tends to improve risk-adjusted returns

Historical and forward-looking return-to-standard deviation ratio, US stock/bond portfolios



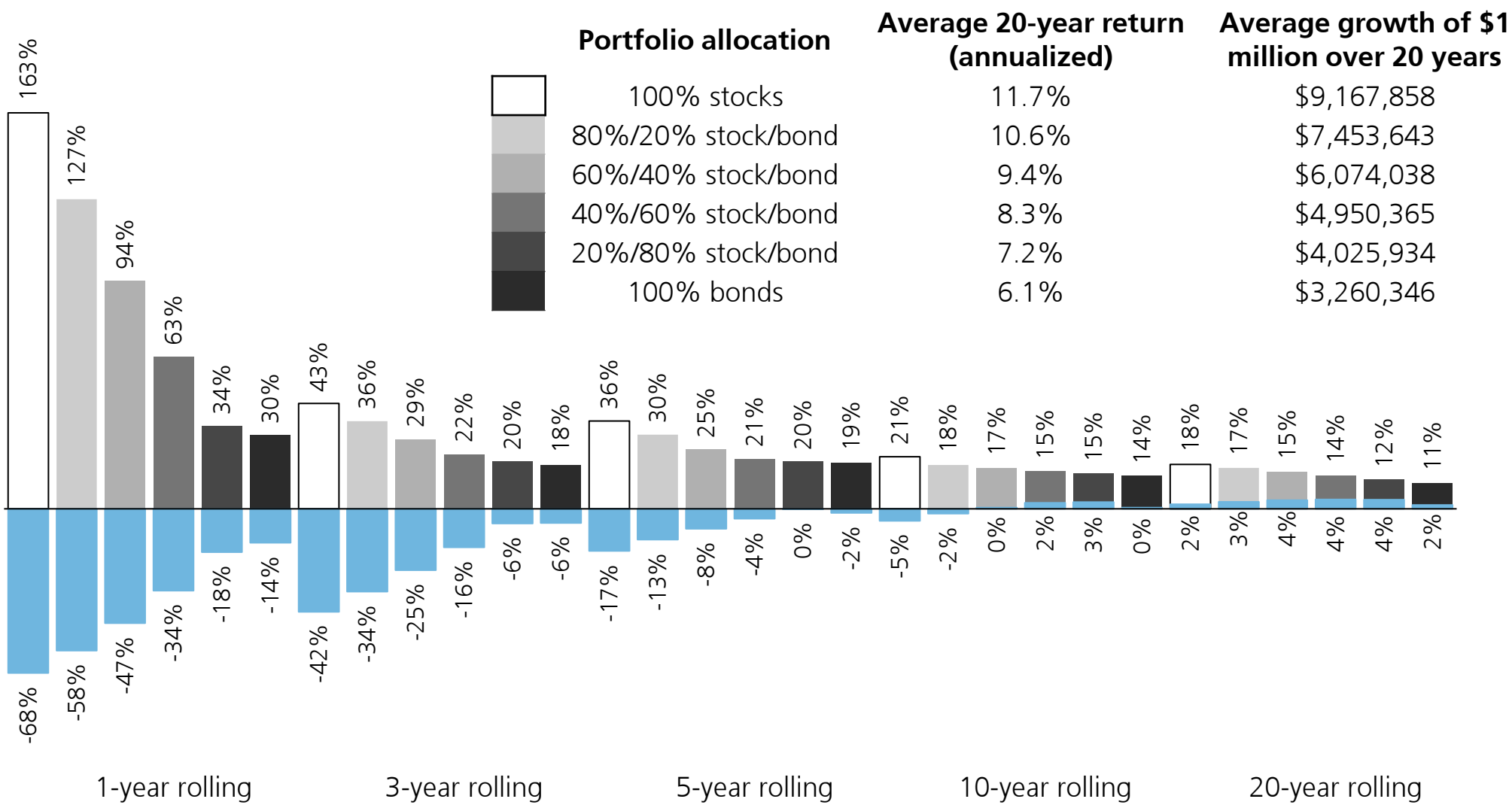
Losses tend to be **less common** over longer time horizons

Historical probability of gain or loss, S&P 500 Index, rolling returns since December 1945



Short time horizons carry a wider range of outcomes and a greater risk of loss

Highest and lowest annualized return by holding period, US stock/bond portfolios, Dec 1925 – Jan 2026



Source: Morningstar Direct, UBS as of as of 31 January 2026. Historical analysis based on monthly total return data for US large-cap stocks (SBBI US Large Stock Total Return Index) and intermediate US government bonds (SBBI US Intermediate-Term Government Bond Total Return Index).

Contact information

UBS Chief Investment Office Global Investment Management (IM)

Ainsley Carbone, CFP®

Retirement Strategist

ainsley.carbone@ubs.com

Dan Scansaroli, PhD

Global IM Head Multi-Asset Solutions & Co-Head IM Americas

daniel.scansaroli@ubs.com

Justin Waring, APMA®, CFP®

Head UBS Wealth Way Strategy & Solutions

justin.waring@ubs.com

UBS Financial Services Inc.
1285 Avenue of the Americas
New York, NY 10019

UBS Financial Services Inc.
www.ubs.com/financialservicesinc

© 2026 UBS Financial Services Inc.
All Rights Reserved. Member SIPC.
UBS Financial Services Inc. is a subsidiary of UBS AG

Important Information and Disclosures

This material is published solely for informational purposes, may be distributed only under such circumstances as may be permitted by applicable law, and is not to be construed as a solicitation or an offer to buy or sell any securities or related financial instruments. This information is general in nature and does not take into account the specific investment objectives, financial situation or particular needs of any recipient.

All information and opinions represent our current views on the topics covered which are based, in part, on information and data obtained from third party and/or publicly available sources. While we believe those sources to be reliable, no representation or warranty, express or implied, is made as to its accuracy or completeness (other than disclosures relating to UBS and its affiliates) of that information.

The information presented is not intended to be a complete statement or summary of the securities, markets or developments referred to in the materials. It should not be regarded by recipients as a substitute for the exercise of their own judgment. Any opinions expressed in this material are subject to change without notice and may differ or be contrary to opinions expressed by other business areas or groups of UBS as a result of using different assumptions and criteria. UBS is under no obligation to update or keep current the information contained herein.

Cautionary statement regarding forward-looking statements. This report contains statements that constitute “forward-looking statements”, including but not limited to statements relating to the current and expected state of the securities market and capital market assumptions. While these forward-looking statements represent our judgments and future expectations concerning the matters discussed in this document, a number of risks, uncertainties, changes in the market, and other important factors could cause actual developments and results to differ materially from our expectations. These factors include, but are not limited to (1) the extent and nature of future developments in the US market and in other market segments; (2) other market and macro-economic developments, including movements in local and international securities markets, credit spreads, currency exchange rates and interest rates, whether or not arising directly or indirectly from the current market crisis; and (3) the impact of these developments on other markets and asset classes. UBS is not under any obligation to (and expressly disclaims any such obligation to) update or alter its forward-looking statements whether as a result of new information, future events, or otherwise.

Wealth Management USA Asset Allocation Committee and the UBS Capital Market Assumptions and Strategic Asset Allocation Models

The capital market assumptions and strategic asset allocation models discussed in this publication were vetted and approved by the Wealth Management USA Asset Allocation Committee (WM USA AAC). Please note that UBS has changed its capital market assumptions and strategic asset allocation models in the past and may do so in the future.

The capital market assumptions are estimates of forward-looking average annual returns for a particular asset class. **They are not guaranteed and do not represent the return of a particular security or investment.**

The strategic asset allocation models are intended to provide a general framework to assist our clients in making informed investment decisions. They are provided for illustrative purposes, and were designed by the WM USA AAC for hypothetical U.S. investors with a total return objective under five different investor risk profiles: conservative, moderate conservative, moderate, moderate aggressive and aggressive. Your UBS Financial Services Inc. Financial Advisor can help you determine how a strategic allocation could be applied or modified according to your individual profile and investment goals. **Asset allocation does not assure profits or prevent against losses from an investment portfolio or accounts in a declining market.**

Important Information and Disclosures

Purpose of this document: This is marketing material intended to help you understand services and investments we offer. It should be used solely for the purposes of discussion with your UBS Financial Advisor and your independent consideration. UBS does not intend this to be fiduciary or best interest investment advice or a recommendation that you take a particular course of action.

Personalized recommendations or advice: If you would like more details about any of the information provided, or personalized recommendations or advice, please contact your UBS Financial Advisor.

Conflicts of interest: UBS Financial Services Inc. is in the business of establishing and maintaining investment accounts (including retirement accounts) and we will receive compensation from you in connection with investments that you make, as well as additional compensation from third parties whose investments we distribute. This presents a conflict of interest when we recommend that you move your assets to UBS from another financial institution or employer retirement plan, and also when we make investment recommendations for assets you hold at, or purchase through, UBS. For more information on how we are compensated by clients and third parties, conflicts of interest and investments available at UBS please refer to the 'Your relationship with UBS' booklet provided at ubs.com/relationshipwithubs, or ask your UBS Financial Advisor for a copy.

Important information about brokerage and advisory services: As a firm providing wealth management services to clients, UBS Financial Services Inc. offers investment advisory services in its capacity as an SEC-registered investment adviser and brokerage services in its capacity as an SEC-registered broker-dealer. Investment advisory services and brokerage services are separate and distinct, differ in material ways and are governed by different laws and separate arrangements. It is important that you understand the ways in which we conduct business and that you carefully read the agreements and disclosures that we provide about the products or services we offer. For more information, please review client relationship summary provided at ubs.com/relationshipsummary.

Important additional information applicable to retirement plan assets (including assets eligible for potential rollover, distribution or conversion): This information is provided for educational and discussion purposes and are not intended to be fiduciary or best interest investment advice or a recommendation that you take a particular course of action (including to roll out, distribute or transfer retirement plan assets to UBS). UBS does not intend (or agree) to act in a fiduciary capacity under ERISA or the Code when providing this educational information. Moreover, a UBS recommendation as to the advisability of rolling assets out of a retirement plan is only valid when made in a written UBS Rollover Recommendation Letter to you provided by your UBS Financial Advisor after a review of detailed information that you provide about your plan and that includes the reasons the rollover is in your best interest. UBS and your UBS Financial Advisor do not provide rollover recommendations verbally. With respect to plan assets eligible to be rolled over or distributed, you should review the IRA Rollover Guide UBS provides at ubs.com/irainformation which outlines the many factors you should consider (including the management of fees and costs of your retirement plan investments) before making a decision to roll out of a retirement plan. Your UBS Financial Advisor will provide a copy upon request.

No tax or legal advice: UBS Financial Services Inc., its affiliates, and its employees do not provide tax or legal advice. You should consult with your personal tax and/or legal advisors regarding your particular situation.

Financial planning services: In providing financial planning services, we may act as a broker-dealer or investment adviser. When we act as investment adviser we charge a separate fee for the service and enter into a written agreement with you. The nature and scope of the services are detailed in the documents and reports provided to you as part of the service.

Important Information and Disclosures

As a firm providing wealth management services to clients, UBS Financial Services, Inc is registered with the U.S. Securities and Exchange Commission (SEC) as an investment adviser and a broker-dealer, offering both investment advisory and brokerage services. Advisory services and brokerage services are separate and distinct, differ in material ways and are governed by different laws and separate contracts. It is important that you carefully read the agreements and disclosures UBS provides to you about the products or services offered. For more information, please see www.ubs.com/workingwithus

There are two sources of UBS research. Reports from the first source, UBS CIO Global Wealth Management, are designed for individual investors and are produced by UBS Global Wealth Management (which includes UBS Financial Services Inc. and UBS International Inc.). The second research source is UBS Group Research, whose primary business focus is institutional investors. The two sources operate independently and may therefore have different recommendations. The various research content provided does not take into account the unique investment objectives, financial situation or particular needs of any specific individual investor. If you have any questions, please consult your Financial Advisor. UBS Financial Services Inc. is a subsidiary of UBS AG and an affiliate of UBS International Inc.

© UBS 2026. The key symbol and UBS are among the registered and unregistered trademarks of UBS. All rights reserved. UBS Financial Services Inc. is a subsidiary of UBS AG. Member FINRA/SIPC