

# UBS ETF *Market Matters*

## ECB's QE ... any yield left?

- The ECB presented on January 22, the details of the expanded asset purchase programme, incl. purchases of Eurozone sovereign bonds amounting to EUR60 billion a month.
- It appears that the only "yielding papers" of Eurozone sovereign issuers are long-term ones (10+ or so).
- The incremental yield can be 'sourced from' EUR corporate bonds, and this *market matters* discusses two corporate bond investible indices with sizable allocation in the lower end of the investment grade segment.

Pawel Janus, Ph.D.  
ETF Strategist, UBS Global Asset Management  
pawel.janus@ubs.com

The Governing Council of the European Central Bank's (ECB) has presented on January 22, the details of the expanded asset purchase programme (Quantitative Easing, QE). The key points are as follows (Source: ECB, 22 January 2015):

- ECB expands purchases to include bonds issued by euro area central governments, agencies and European institutions
- Combined monthly asset purchases to amount to EUR60 billion
- Purchases intended to be carried out until at least Sep. 2016
- Programme designed to fulfil price stability mandate

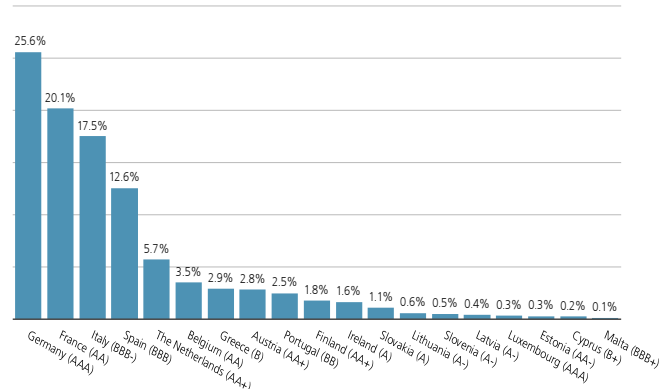
The EUR1.1tn monetary stimulus aims to support investment and consumption in the Eurozone, which ultimately should move inflation rates towards the target of 2%. The ECB will buy bonds (on the yield curve, up to 30 years) in the secondary market. The purchases of securities will be based on the National Central Banks' shares in the ECB's capital key (**Figure 1**), however, not more than 25% of each issue, and not more than 33% of each issuer's debt.

The ECB QE had been largely "priced into" sovereign debt. **Figure 2** shows the yields of the iBoxx EUR Germany of different maturity buckets. Last year was characterized by a *straight-line* decay of German yields, including all maturity buckets, and into to negative territory for the mid-term (up to five years). The portfolio yield for the iBoxx EUR Sovereigns - a market-value weighted basket of Eurozone sovereign issuers listed in Figure 1 - has also experienced a sharp decline from its peaks in 2011-2012, in particular driven by the intensified anticipation of the QE. Consequently, the spreads of the iBoxx EUR Sovereigns over German Bunds are nearly back to 2009 levels, when the Greek debt crisis escalated (**Figure 3**), approx. 30bps for the 1-5 bucket and 60bps for the 10+ bucket. The spread of the Italian bonds is approx. 160bps for iBoxx EUR Italy 10+ long-end bucket (c. 70bps premium as compared to June '09 level), and approx. 60bps on the short-end 1-5 years (c. 15bps premium to June '09). It appears that the only "yielding papers" of Eurozone sovereign issuers are long-term ones. The prospective implication of the QE is that investors will likely get "crowded out" from sovereign market, leading to a continued appetite for corporate credit.

### Corporate Yield Pick-Up

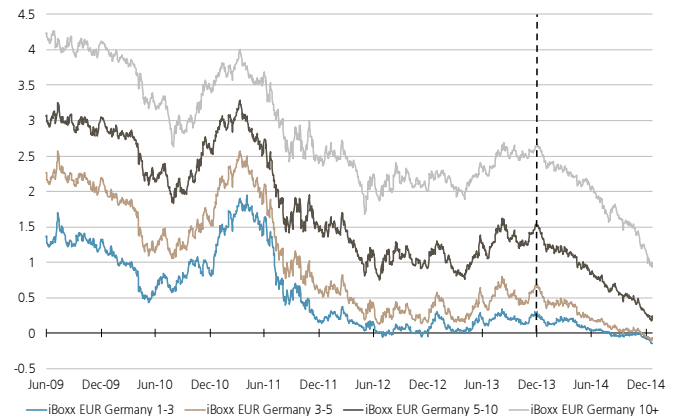
The current landscape of EUR-denominated bond indices is summarized in **Table 1**. The Barclays Euro-Aggregate Corporates benchmark delivers a yield of 98bps as compared to the 68bps of the Barclays Euro-Aggregate Treasury. Higher yield is associated with higher credit risk (prime grade vs. default risk), with longer duration (interest rate risk) or a liquidity premium (investment grade vs. high yield issues).

**Figure 1:** NCBs' contributions to the ECB's capital and long-term sovereign S&P ratings



Source: ECB, S&P, as of 2 January 2015

**Figure 2:** Annualized yield (in %)



Source: Markit, as of 22 January 2015

**Figure 3:** Annualized benchmark spread (in bps)



Source: Markit, as of 22 January 2015;

\*Annualized benchmark spread for iBoxx EUR Italy 1-5 is computed as the average benchmark spread of the iBoxx EUR Italy 1-3 and iBoxx EUR Italy 3-5.

For all charts/tables: Past performance is not a reliable indicator for the future.

**Table 1: EUR Fixed Income Aggregates: Landscape**

Benchmark	Yield to Maturity	Modified Duration	Maturity (in Years)
Barclays Euro-Aggregate: Corporates	0.98	4.91	5.53
Barclays Euro-Aggregate: Corporates 1-3	0.50	1.91	2.00
Barclays Euro-Aggregate: Corporates 10+	1.82	10.52	13.15
Barclays Euro-Aggregate: Corporate Aaa	0.87	8.28	9.57
Barclays Euro-Aggregate: Corporate Baa	1.26	4.74	5.40
Barclays Euro-Aggregate: Treasury	0.68	7.14	9.02
Barclays Pan-European High Yield (Euro)	4.07	3.88	4.77

Source: Barclays POINT, Markit, UBS Global AM, as of 22 January 2015

**Figure 4** shows the historical compositions of the credit quality for investment grade (IG) and high yield (HY) segments. The lower-rated IG segments (A-Baa) have expanded, at the cost of the prime credit segment (Aaa). Notably, the market value of the European HY segment (right panel) is highly volatile: it enjoyed a substantial increase in 2010-2012 (increase in net new issuances and uplifting valuations), after it had significantly contracted in 2008 due to credit stress.

In the Euro-Aggregate Corporates, the market value of Euro Area issuers is approx. 60%. In particular, the yield pick-up is decomposed in **Figure 5** at the issuer country level, ordered clock-wise by decreasing yield. The yield contributions come from emerging market issuers (China, Turkey, Brazil or India), whose market value is however marginal, and from US and UK issuers, who *yield* more than the average Eurozone issuer, and who have a combined market share of 25%.

**Investible Corporate Bond Indices**

The investible indices typically under-represent the aggregate universe by selecting a certain maturity range, credit quality, seniority, liquid issues, risk of domicile, etc.. UBS WM CIO sees the best risk-return relationship in or just below the lower end of the investment grade segment Baa (UBS Chief Investment Office WM, 20 January 2015). Two examples of indices with substantial exposure to the lower end of the investment grade segment are the Barclays Euro Area Liquid Corporates 1-5 index and the iBoxx EUR Liquid Corporates index (details in **Table 2**).

The Barclays Euro Area Liquid Corporates 1-5 year index captures liquid short-end bonds issued by Euro Area corporates. This index has approx. 14% excess allocation to the lowest IG credit as compared to the Barclays Euro-Aggregate Corporates presented in Figure 4 (i.e. 56% vs. 42%).

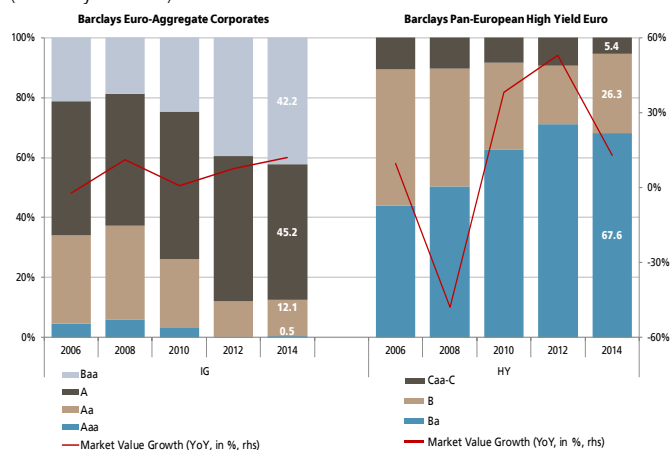
The iBoxx EUR Liquid Corporates index captures EUR-denominated bonds (incl. issuers from the US, UK or Australia), and it partially 'imports' the yield from outside the Eurozone, in a similar way as in Figure 5. For example, 28% of this index is exposed towards non-Eurozone corporates, and it captures EUR-denominated bonds from some major US and UK financial institutions (e.g. Citigroup, Bank of America, Toyota Motor Credit Corp., or Barclays Bank Plc, Lloyds Bank Plc, respectively), with the spreads (of some issues) higher than 100bps against German bunds. The implementation of the QE starting in March is likely to further tighten the spreads in EUR corporate bonds.

**Table 3: Euro Fixed Income UBS ETFs**

Fund name	TER	AuM	Base Ccy.	Replication	Domicile	Distribution	Incept. date	ISIN	Bloomberg
UBS ETF (LU) Barclays Euro Area Liquid Corporates 1-5 UCITS ETF (EUR) A-dis	0.18%	82	EUR	Physical	Luxembourg	semi-annual	30.05.2014	LU1048314196	CBEU5 SW
UBS ETF (LU) Markit iBoxx € Liquid Corporates UCITS ETF (EUR) A-dis	0.20%	47	EUR	Physical	Luxembourg	semi-annual	24.01.2012	LU0721553864	UB98 LN
UBS ETF (LU) Markit iBoxx € Germany 1-3 UCITS ETF (EUR) A-dis	0.17%	108	EUR	Physical	Luxembourg	semi-annual	24.01.2012	LU0721553351	UB88 LN
UBS ETF (LU) Markit iBoxx € Germany 3-5 UCITS ETF (EUR) A-dis	0.17%	3	EUR	Physical	Luxembourg	semi-annual	24.01.2012	LU0721553435	UB90 LN
UBS ETF (LU) Markit iBoxx € Germany 5-10 UCITS ETF (EUR) A-dis	0.17%	22	EUR	Physical	Luxembourg	semi-annual	24.01.2012	LU0721553518	UB92 LN
UBS ETF (LU) Markit iBoxx € Germany 7-10 UCITS ETF (EUR) A-dis	0.17%	6	EUR	Physical	Luxembourg	semi-annual	24.01.2012	LU0721553609	UB95 LN
UBS ETF – Markit iBoxx € Sovereigns 1-5 UCITS ETF (EUR) A-dis	0.17%	2	EUR	Physical	Luxembourg	semi-annual	29.11.2013	LU0969639128	SS1CHA SW

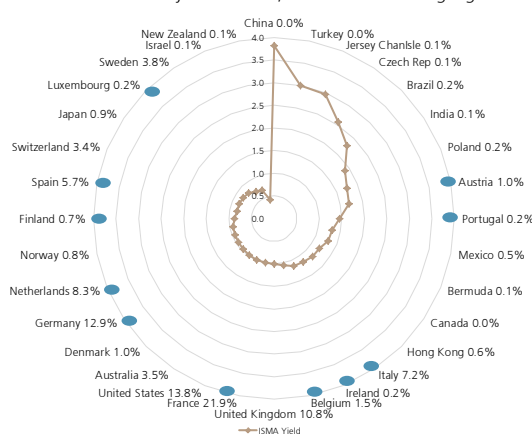
AuM in GBP million

**Figure 4: European Bond Market: Credit Quality and Market Value (end-of-year data)**



Source: Barclays POINT, UBS Global AM, as of 31 December 2014

**Figure 5: Barclays Euro-Aggregate Corporates: Yield (Market value behind country name in %, Euro Area issuer highlighted in blue)**



Source: Barclays POINT, Markit, UBS Global AM, as of 22 January 2014

**Table 2: EUR Fixed Income Investible Indices**

Benchmark	Yield to Maturity	Modified Duration	Maturity (in Years)	Baa	Euro Area
Barclays Euro Area Liquid Corporates 1-5	0.62	2.91	3.07	56%	100%
iBoxx EUR Liquid Corporates	0.74	4.56	4.83	24%	72%

Source: Barclays POINT, Markit, UBS Global AM, as of 22 January 2014

For all charts/tables: Past performance is not a reliable indicator for the future.

## How to contact us

<b>Contact</b>	Andrew Walsh – Head UBS ETF Sales UK & Ireland Tel. +44 20 7901 5901/ Mob. +44 78 1804 7240 andrew.walsh@ubs.com	Florian Cisana – UBS ETF Sales UK & Ireland Tel. +44 20 7901 5398 / Mob. +44 78 8009 6848 florian.cisana@ubs.com
<b>E-mail / Website</b>	ubs-etf-uk@ubs.com / ubs.com/etf	<b>Bloomberg</b> UETF <GO>

## About UBS ETFs

Passive capital investments have been a core competence of UBS Global Asset Management for over 30 years. This business segment, which includes UBS ETFs, has assets under management of GBP 137 billion (September 2014). Assets under management in UBS ETFs total approx. GBP 13.5 billion (December 2014). UBS is one of Europe's leading ETF providers, and Europe's second largest provider of physically replicated ETFs (measured in number of ETFs). UBS ETFs replicates 151 indices covering equities, bonds, precious metals, real estate, commodities and alternative investments. UBS ETFs are listed on four of Europe's leading stock exchanges: Borsa Italiana, the German Stock Exchange (XETRA), the London Stock Exchange (LSE), and the SIX Swiss Exchange.

For more information on UBS ETFs: [www.ubs.com/etf](http://www.ubs.com/etf)



UBS Global Asset Management (UK) Ltd is a subsidiary of UBS AG. Registered in England. UBS Global Asset Management (UK) Ltd and UBS Global Asset Management Funds Ltd are authorised and regulated by the Financial Conduct Authority. UBS Global Asset Management Life Ltd is authorised by the Prudential Regulation Authority and regulated by the Financial Conduct Authority and the Prudential Regulation Authority. Telephone calls may be recorded.

This document is for Professional Clients only. It is not to be distributed to or relied upon by Retail Clients under any circumstances.

The document has not been prepared in line with the FCA requirements designed to promote the independence of investment research and is not subject to any prohibition on dealing ahead of the dissemination of investment research.

The Luxembourg and Irish domiciled funds are recognised scheme under section 264 of the Financial Services and Markets Act 2000. They seek UK Reporting Fund Status. The protections offered by the UK's regulatory system, and compensation under the Financial Services Compensation Scheme, will not be available.

The Switzerland domiciled funds are not recognised under section 264 of the Financial Services and Markets Act and are therefore subject to the restrictions on promotion in section 238 of the Financial Services and Markets Act.

The returns payable to the fund are dependent on payments received by the fund from the swap counterparty under the terms of the relevant swap and, therefore are subject to credit risk of the swap counterparty. In the event that the swap counterparty defaults under the terms of the relevant swap, the funds may suffer a loss.

This material supports the presentation(s) given. It is not intended to be read in isolation and may not provide a full explanation of all the topics that were presented and discussed. Care has been taken to ensure the accuracy of the content, but no responsibility is accepted for any errors or omissions. Please note that past performance is not a guide to the future. The value of investments and the income from them may go down as well as up, and investors may not get back the original amount invested. This document is a marketing communication. Any market or investment views expressed are not intended to be investment research.

The document has not been prepared in line with the FCA requirements designed to promote the independence of investment research and is not subject to any prohibition on dealing ahead of the dissemination of investment research. The information contained in this document should not be considered a recommendation to purchase or sell any particular security and the opinions expressed are those of UBS Global Asset Management and are subject to change without notice. Furthermore, there can be no assurance that any trends described in this document will continue or that forecasts will occur because economic and market conditions change frequently. This document does not create any legal or contractual obligation with UBS Global Asset Management. The recipient agrees that this information shall remain strictly confidential where it relates to the Investment Manager's business. The prior consent of UBS Global Asset Management (UK) Ltd should be obtained prior to the disclosure of commercially sensitive information to a third party (excluding the professional advisors of the recipient). Information reasonably deemed to be commercially sensitive and obtained from UBS Global Asset Management (UK) Ltd should not be disclosed. This information is supplied with a reasonable expectation that it will not be made public. If you receive a request under the Freedom of Information Act 2000 for information obtained from UBS Global Asset Management (UK) Ltd we ask that you consult with us. We also request that any information obtained from UBS Global Asset Management (UK) Ltd in your possession is destroyed as soon as it is no longer required. This document may not be reproduced, redistributed or republished for any purpose without the written permission of UBS AG.

This document is issued by [UBS Global Asset Management (UK) Ltd] and is intended for limited distribution to the clients and associates of UBS Global Asset Management. Use or distribution by any other person is prohibited. Copying any part of this publication without the written permission of UBS Global Asset Management is prohibited. Care has been taken to ensure the accuracy of its content, but no responsibility is accepted for any errors or omissions herein.

© UBS 2015. The key symbol and UBS are among the registered and unregistered trademarks of UBS. All rights reserved. E37