

Private real estate

Private market education

Karim Cherif, Head Alternative Investments, UBS Switzerland AG; Antoinette Zuidweg, Alternative Investments Strategist, UBS Switzerland AG; Daniel J. Scansaroli, Head of Portfolio Strategy & UBS Wealth Way Solutions, CIO Jennifer Liu, Private Markets Strategist, UBS Financial Services Inc. (UBS FS)

This primer provides an overview of private real estate and covers the strategy basics, manager value-add, performance, and benefits in an investor's portfolio.



Private real estate (PRE) strategies represent over USD 1.1 tr or 9% of global private markets AUM.



Real estate investing consists of receiving rental income and capital gains from the purchase and ownership of a piece of land or a building.



Success in sourcing, developing, and exiting real estate projects can drive return premiums above public markets over a long time horizon.

Summary

- Three main private real estate (PRE) strategies include core, value-add, and opportunistic.
 - The core strategy aims at generating recurring rental income from high-quality properties in primary locations.
 - Value-add real estate investing focuses on properties that require some level of lease-up, refurbishment, or repositioning.
 - At the higher end of the risk spectrum, "opportunistic investing" targets properties with high (re)development potential.
 - When compared to publicly traded REITs, private real estate is generally less liquid, has lower correlation to public markets, has lower volatility, and incurs higher fees.
 - Private real estate managers can invest in niche strategies or drive value through more transformational projects than that of public REITs.
 - Using Cambridge Associates data, PRE strategies (Opportunistic/Value-add) delivered a median 11.8% vintage year internal rate of return (IRR) and 1.44x total value to paid-in (TVPI) over the 1994–2019 period.
 - PRE strategies outperformed public markets when observing FTSE NAREIT All Equity REITS public market equivalent (PME) returns by about 202 bps over the 1994–2019 vintage years.
 - PRE funds can add attractive and differentiated sources of return as they expand an investor's universe to real assets with historically low correlation with traditional investments.
 - With leases and rental income often adjusting with inflation, real estate investments may add an element of inflation protection.
 - With significant differences in manager performance, key risks to private real estate include leverage, development execution, and exit timing.
 - Other, more general private market risks also apply, including significant illiquidity of fund vehicles, limited control, and high fees.
- This report is part of a series of short primers on specific private market strategies. For a deeper understanding of private markets, please read our Introduction to Private Markets. Find more information on the client portal or contact your advisor for assistance.



11.8%

Median pooled IRR



1.44 x

Median vintage year TVPI (total value to paid in) multiple



-7.4%

Lower quartile IRR*



28.3%

Upper quartile IRR*



0.39

Correlation to public REITs**

Source: Based on historical data for funds launched between vintage years 1994-2019 using Cambridge Associates data, UBS estimates. *Quartile IRR's reflect minimum and maximum value across vintage years. Note: Given most funds take a few years for performance to settle, performance of recent vintage years may be less meaningful. Internal rates of returns are net of fees, expenses, and carried interest. December 2023.

This report has been prepared by UBS Switzerland AG.

Please see important disclaimers and disclosures at the end of the document.

What is the private real estate strategy?

Private real estate (PRE) strategies represent over USD 1.1tr, or 9%, of global private markets AUM. In its most basic form, real estate investing consists of receiving rental income and capital gains from the purchase and ownership of a piece of land or a building, spanning from residential and multi-family units to office, industrial, logistics, or retail space. Three main private real estate strategies include core, value-add, and opportunistic.

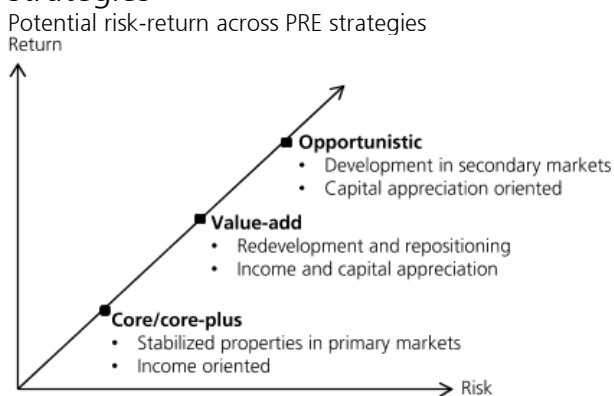
Core/core-plus real estate

- The core strategy is the best-known private real estate strategy and aims at generating recurring rental income from high-quality properties in primary locations.
- Such assets are typically fully or close to fully leased for the long term and benefit from a stable and high-grade tenant base.
- Most of the annualized total returns of core investing come from rental income (90%–100%), which is a function of the capability of tenants to pay rents and vary with occupancy rates. Gains from capital appreciation are typically limited (0–10%).
- Holding periods tend to be long, in the order of 10 years or more.
- Leverage applied by the fund typically falls in the 15%–30% range.
- A variant of this strategy is “core-plus,” which has a slightly higher risk-return profile, based on re-leasing upside and the use of higher leverage than the core strategy.
- Core-plus returns are also primarily driven by rental income (80%–90%) with relatively limited potential for capital gains (10%–20%).
- Holding periods are also long, in the order of seven or more years. Leverage is typically around 50%.
- A core/core-plus real estate strategy is usually implemented through limited redemption fund structures, and generally generates more stable returns over the cycle.

Value-add real estate

- Value-add real estate investing focuses on properties that require some level of lease-up, refurbishment, repositioning or other actions to enhance the value of the property and move toward the core-type attributes outlined previously.
- As a result, “value-add” real estate investing focuses more than “core” strategies on future potential capital appreciation.
- Underlying property types include the same assets as in core, with the addition of other specialty types including hospitality assets, healthcare-related property, student housing, self-storage, and other niches.
- Value-add real estate investing requires careful planning of entry and exit points, close management of properties needing renovation, and/or redevelopment and possible repositioning.
- Fund managers have to identify attractive assets, implement relevant property improvements and tenant identification or upgrade strategy, and provide ongoing asset management.
- Vacancies are actively managed to accelerate transformations or reconversions.
- Returns from value-add real estate strategies are driven by a combination of income (30%–50%) and capital gains (50%–70%). Property holding periods tend to be in the five- to seven-year range, although investment vehicles tend to be 10-year closed-end funds.
- Leverage is typically in the range of 40%–70%.
- Value-add real estate, due to the greater risks involved, seeks to generate higher returns than core strategies.

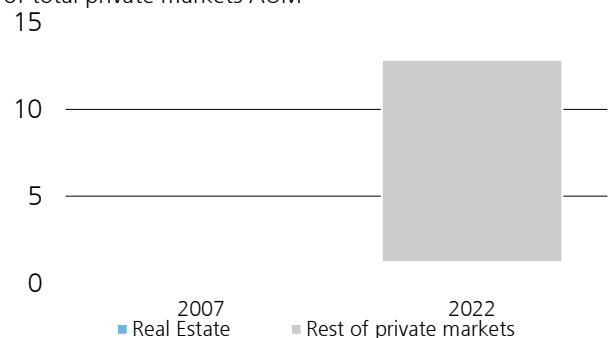
Fig. 1: Illustration of private real estate strategies



Source: UBS

Fig. 2: The private market industry has grown rapidly in the last decade

With over USD 1tr, private real estate represents about 9% of total private markets AUM



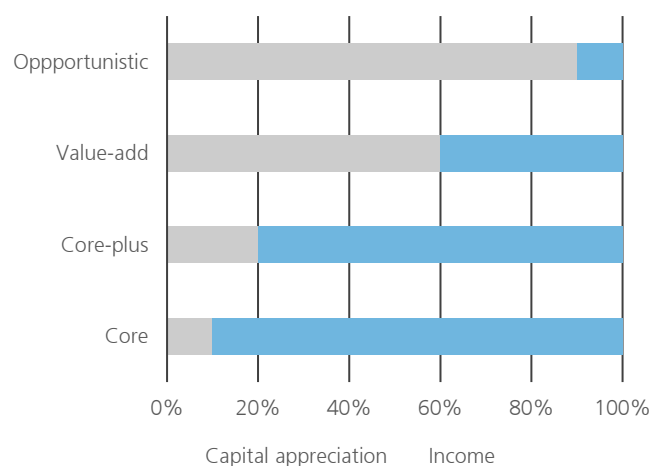
Source: Pitchbook. UBS, December 2023

Opportunistic real estate

- At the higher end of the risk spectrum, "opportunistic investing" targets properties with high (re)development potential.
- These properties range from ground-up development (greenfield and brownfield); complex turnaround and redevelopment situations; and distressed situations including debt, real estate operating companies, land speculation, and even non-performing loan portfolios.
- Investors expect a substantial part of their return to be derived from capital appreciation. Besides traditional risks associated with market fundamentals, the fund manager needs to manage significant financial risks like leverage.
- Returns from opportunistic real estate strategies are driven very little by rental income (0%-10%) and primarily focused on capital appreciation (90%-100%).
- Commonly operated through closed-end fund structures, opportunistic real estate holds assets for five years or more, potentially longer in the case of ground-up development and potentially shorter in the case of debt or other securities.
- Leverage tends to be in the 60%-80% range. Opportunistic real estate seeks to generate high returns with relatively high risk related to execution.

Fig. 3: Illustration of private real estate return derivation

Core strategies are typically more income oriented, while Opportunistic are more capital appreciation oriented



Source: UBS, December 2023

Sources of value-add

Real estate assets have various characteristics that differentiate themselves from other traditional assets. Given information asymmetry and local segmentation, properties often require significant managerial attention, specialized knowledge, and expertise.

- **Deal sourcing:** Successful private real estate managers uncover opportunities where others do not. Access to a pipeline of high-quality and hard-to-find deals is key. To gain an advantage against other bidders, managers rely on a strong network of property brokers, consultants, developers, as well as other preferred global and local partners.
- **Profitability assessment:** Assessing the return potential of a property is not easy, especially when value needs to be created. Industry expertise—especially when underwriting retail, hospitality, or healthcare transactions—is also required to forge a clear deal thesis. While for core assets managers aim for attractive entry values, non-core assets typically require a detailed cost analysis on how to improve value, revenues, and operating profitability.
- **Repositioning assets:** For managers following a more opportunistic strategy, successful repositioning and developing new capabilities are the key factors to unlocking value to underlying assets.
- **Transaction structuring:** Property transactions, in particular for large projects, can require complex financing. Ownership of an asset can be obtained through a variety of instruments including loan pools, joint ventures, listed securities, as well as other real estate assets. Tax considerations and planning are also required pre- and post-acquisition.
- **Property management:** Good property management is the key to securing high stable cash flows. Real estate requires significant management attention including finding new tenants, extending new leases, optimizing rents, maximizing incremental revenues (parking/public spaces), planning maintenance, conducting operational or structural improvements, and minimizing expenses.
- **Exit process:** Property managers need to be adept at assessing the timing and exit method to maximize realized gains. Planning multiple exit strategies in case something goes wrong is key.

Public REIT vs. private real estate

With investors likely familiar with public REITs (real estate investment trusts), we compare and contrast key factors between REITs and private real estate funds.

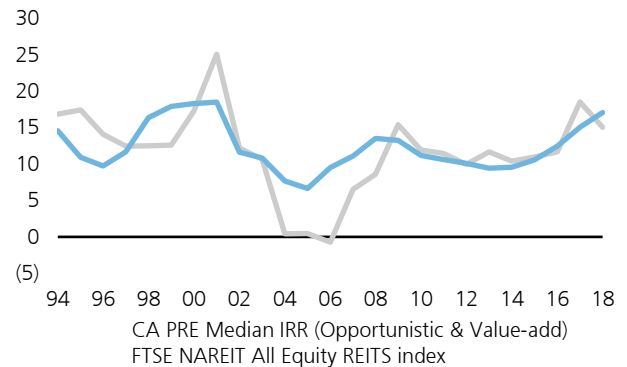
- REITs are pools of properties (equity REIT) or mortgages (mortgage REIT) that are bundled in the form of a security.
- Similar to a PRE fund, an equity REIT owns and operates real estate. However, unlike PRE funds, REITs have generally lower fees and are more transparent and liquid given that shares are publicly traded on an exchange.
- However, in exchange for higher liquidity, REIT shares can trade at a premium or discount to net asset value (NAV), depending on market dynamics. Additionally, REIT returns typically exhibit higher volatility and correlation to public markets versus those of private real estate.
- Given higher leverage usage, yields for private real estate are typically higher than for public REITs, assuming similar strategies.
- Given the reliance on income to generate returns, REIT strategies tend to focus more on core and value-add strategies, while private real estate funds can implement core, value-add, and/or opportunistic strategies.
- Public REITs tend to be sector-specific (malls, wireless towers, logistics, data centers, multi-family, healthcare, etc.), while it's also possible to select diversified REITs. From a performance point of view, the market will price in the most important sector exposure, or investors will discount overly weighting the least or most preferred subsector depending on momentum.
- Private real estate funds tend to be diversified across sectors, while they focus on a value-add or opportunistic investment style. To better position themselves, a large number of smaller funds prefer to be focused on niches or distinguished geographies.
- Private real estate managers can invest in niche strategies or drive value through more transformational projects than is possible for public REITs.

Introduction to vintage year returns

- Private market returns are assessed using vintage year performance, which reflects the sum of all cash flows (contributions, distributions) from funds inception in the referenced year.
- For example, if hypothetical fund ABC reported vintage year 2005 IRR of 15%, ABC was inception in 2005 and the IRR reflects all investment activity performed over the course of its lifecycle: contributions and distributions made in 2005, 2006, 2007, etc., until the end of the fund.
- If hypothetical fund XYZ reported vintage year 2008 TVPI of 1.3x, the fund returned USD 1.30 for every USD 1 invested through the duration of the fund's life (2008–2018).

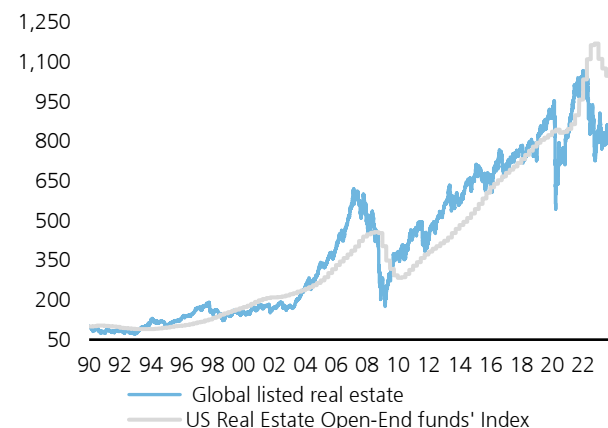
Fig. 4: Private real estate IRR vs. FTSE NAREIT All Equity REITS PME index

PRE has outperformed public markets in 14 out of 26 vintage years between 1994 and 2019



Source: Cambridge Associates until 1Q23, UBS, December 2023

Fig. 5: Non-listed global real estate funds vs. listed real estate total return



Source: FTSE EPRA NAREIT Developed Total Return Index for listed, NCREIF Fund Index for Open-end Diversified Core Equities provides quarterly and annual total returns for 28 institutional open-end commingled real estate funds. Bloomberg, UBS, December 2023

Real estate and the business cycle

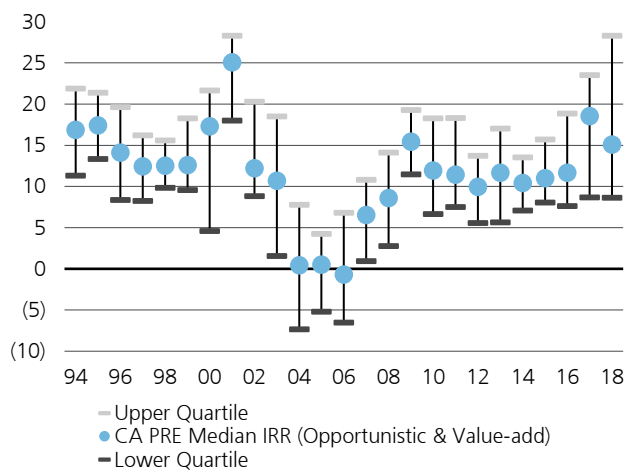
- Real estate returns are generally linked to economic cycles, with GDP growth, low unemployment, consumer spending, and low interest rates supporting real estate dynamics.
- However, dynamics can vary by geography and asset type (office, apartment, industrial, retail, etc.), with vacancy rates, rental growth, and new construction also influencing the real estate market.
- PRE returns were highest soon after the global financial crisis (2009 vintage) and the Dot-com crisis (2001 vintage). This period exhibited depressed property prices and lower cost of capital.
- PRE returns were lowest a few years before the global financial crisis (2004–2006 vintages). These investment periods exhibited higher purchase prices, rising cost of capital, and liquidity pressure leading up to the global financial crisis.

Real estate in your portfolio

- PRE funds can add attractive and differentiated sources of return as they expand an investor’s universe to real assets that have historically low correlation with traditional equity and fixed-income investments.
- PRE funds can earn a premium above public market equivalent returns for providing long-term capital, enabling this active approach to sourcing assets, executing on repositioning projects, and optimizing property operations.
- For core or value-add focused strategies, PRE investments can provide a sizable yield component to returns with potentially lower volatility.
- With leases and rental income often adjusting with inflation, real estate investments may add an element of inflation protection.

Fig. 6: Private real estate return dispersion per vintage year

High level of dispersions within each vintage year shows importance of manager selection



Source: Cambridge Associates until 1Q23, UBS. December 2023

Risks

- Changes in general business conditions including GDP, unemployment, interest rates, household formation, and household income can affect real estate returns.
- Risks of investing in real estate projects include substantial leverage, potential inability to service this debt, and deal timing.
- Risks of investing in PRE funds include blind pool structure, potential for unwanted or unintended sector risks or concentration.
- Tenants may delay or default on rent obligations. Additionally, higher-than-expected vacancy rates may adversely impact returns.
- Real estate projects may incur unforeseen damages to property, which may delay completion and/or increase costs.
- Given the long lead time for new development, exit conditions may be considerably different from the time initial investments were made.
- Private real estate funds are longer-term investments, with the typical fund life around 7–10 years.

Other, more general private market risks also apply, including significant illiquidity of fund vehicles, limited control, disclosure, and transparency on underlying holdings, and high fees. These risks cannot be fully eliminated, but can be reduced through extensive institutional due diligence and rigorous investment and monitoring processes.

Appendix

Selected definitions

- **Correlation:** the degree to which the fluctuations of one variable are similar to those of another.
- **Leverage:** the use of borrowed capital or instruments to increase the potential return (but also potential losses) of an investment, a simple example is a mortgage used in real estate transactions.
- **Leveraged buyout funds:** a private equity strategy using borrowed capital to gain control of a company.
- **Illiquidity premia:** the premium that an investor can demand depending on how difficult it is to convert the underlying security can be converted to cash.
- **Multiples:** a term that measures some aspect of a company's financial well-being, determined by dividing one metric by another metric. The metric in the numerator is typically larger than the one in the denominator, because the top metric is usually supposed to be many times larger than the bottom metric.
- **Multiple expansion:** describes the way a particular valuation metric increases to reflect a higher value assigned to an underlying investment.
- **Value add:** describes the operational, business, or structural improvements private market managers seek through underlying portfolio investments.
- **Cash flows:** cash flow is the net amount of cash and cash-equivalents being transferred into and out of a fund.
- **Public Market Equivalent (PME):** a method that converts public market returns to a benchmark that can be compared to private market returns.
- **IRR:** a return method used to evaluate private market investments and reflects the discount rate at which the present value of an investment's future cash flow equals the cost of the investment.
- **TVPI (Total Value to Paid In):** a return metric that describes the total capital distributed back to the investor + residual value left in the fund divided by invested capital.
- **Exit:** the time period in which an investor can convert holdings into cash to be liquidated over a designated period of time.
- **IPO:** the first sale of stock by a private company to the public. Also referred to as an "initial public offering."
- **Standard deviation:** a measure of the degree to which individual values vary from the distribution mean. The higher the number, the greater the risk.
- **Dry powder:** refers to cash reserves kept on hand by a private markets firm to cover future obligations, purchase assets or make acquisitions.
- **J-curve:** illustrates a period of initial negative cash flows (contributions) towards positive cash flows (distributions back to the investor) over a period of time.
- **Sponsor:** the general partner in a limited partnership who organizes and signs up investors.
- **Secondary buyout:** describes a sale between private market firms
- **Trade sale/strategic sale:** describes a sale of a business to another business operating in a similar industry.
- **Senior debt:** loans or debt securities that have claim prior to junior obligations and equity on a corporation's assets in the event of liquidation.
- **Junior debt:** loan or security that ranks below other loans or securities with regard to claims on assets or earnings. In the case of borrower default, creditors who own subordinated debt won't be paid out until after senior debt holders are paid in full.
- **Vintage year:** is the year in which the first influx of investment capital is delivered to a project or company. This marks when capital is contributed by venture capital, a private equity fund or a partnership drawing down from its investors.
- **M&A:** mergers and acquisitions is a general term that refers to the consolidation of companies or assets through various types of financial transactions. M&A can include a number of different

transactions, such as mergers, acquisitions, consolidations, tender offers, purchase of assets and management acquisitions.

- **Blind pool:** money collected from several people which is put into a fund and invested for their profit. It is left unspecified which properties are to be acquired.
- **Unit economics:** a measure of direct revenues and costs on a unit basis for a particular business model.
- **Minority stake:** reflects a non-controlling interest that is less than 50% of a particular entity.
- **Spin off:** describes the separation of an independent company from a larger parent.
- **Control provisions:** designed to provide a level of influence over significant operational and business matters.
- **Redemption rights:** gives investors the right to force a company to repurchase their shares after a period of time.
- **Idiosyncratic risk:** risk associated with a narrow set of factors pertaining to a particular company. Risk that has little association with overall market risk.
- **Tag-along provisions:** provides a minority shareholder the right to join in on a sale of a company that is initiated by a majority shareholder.

Non-Traditional Assets

Non-traditional asset classes are alternative investments that include hedge funds, private equity, real estate, and managed futures (collectively, alternative investments). Interests of alternative investment funds are sold only to qualified investors, and only by means of offering documents that include information about the risks, performance and expenses of alternative investment funds, and which clients are urged to read carefully before subscribing and retain. An investment in an alternative investment fund is speculative and involves significant risks. Specifically, these investments (1) are not mutual funds and are not subject to the same regulatory requirements as mutual funds; (2) may have performance that is volatile, and investors may lose all or a substantial amount of their investment; (3) may engage in leverage and other speculative investment practices that may increase the risk of investment loss; (4) are long-term, illiquid investments, there is generally no secondary market for the interests of a fund, and none is expected to develop; (5) interests of alternative investment funds typically will be illiquid and subject to restrictions on transfer; (6) may not be required to provide periodic pricing or valuation information to investors; (7) generally involve complex tax strategies and there may be delays in distributing tax information to investors; (8) are subject to high fees, including management fees and other fees and expenses, all of which will reduce profits.

Interests in alternative investment funds are not deposits or obligations of, or guaranteed or endorsed by, any bank or other insured depository institution, and are not federally insured by the Federal Deposit Insurance Corporation, the Federal Reserve Board, or any other governmental agency. Prospective investors should understand these risks and have the financial ability and willingness to accept them for an extended period of time before making an investment in an alternative investment fund and should consider an alternative investment fund as a supplement to an overall investment program.

In addition to the risks that apply to alternative investments generally, the following are additional risks related to an investment in these strategies:

- **Hedge Fund Risk:** There are risks specifically associated with investing in hedge funds, which may include risks associated with investing in short sales, options, small-cap stocks, "junk bonds," derivatives, distressed securities, non-U.S. securities and illiquid investments.
- **Managed Futures:** There are risks specifically associated with investing in managed futures programs. For example, not all managers focus on all strategies at all times, and managed futures strategies may have material directional elements.
- **Real Estate:** There are risks specifically associated with investing in real estate products and real estate investment trusts. They involve risks associated with debt, adverse changes in general economic or local market conditions, changes in governmental, tax, real estate and zoning laws or regulations, risks associated with capital calls and, for some real estate products, the risks associated with the ability to qualify for favorable treatment under the federal tax laws.
- **Private Equity:** There are risks specifically associated with investing in private equity. Capital calls can be made on short notice, and the failure to meet capital calls can result in significant adverse consequences including, but not limited to, a total loss of investment.
- **Foreign Exchange/Currency Risk:** Investors in securities of issuers located outside of the United States should be aware that even for securities denominated in U.S. dollars, changes in the exchange rate between the U.S. dollar and the issuer's "home" currency can have unexpected effects on the market value and liquidity of those securities. Those securities may also be affected by other risks (such as political, economic or regulatory changes) that may not be readily known to a U.S. investor.

Appendix

UBS Chief Investment Office's ("CIO") investment views are prepared and published by the Global Wealth Management business of UBS Switzerland AG (regulated by FINMA in Switzerland) or its affiliates ("UBS"), part of UBS Group AG ("UBS Group"). UBS Group includes Credit Suisse AG, its subsidiaries, branches and affiliates.

The investment views have been prepared in accordance with legal requirements designed to promote the **independence of investment research**.

Generic investment research – Risk information:

This publication is **for your information only** and is not intended as an offer, or a solicitation of an offer, to buy or sell any investment or other specific product. The analysis contained herein does not constitute a personal recommendation or take into account the particular investment objectives, investment strategies, financial situation and needs of any specific recipient. It is based on numerous assumptions. Different assumptions could result in materially different results. Certain services and products are subject to legal restrictions and cannot be offered worldwide on an unrestricted basis and/or may not be eligible for sale to all investors. All information and opinions expressed in this document were obtained from sources believed to be reliable and in good faith, but no representation or warranty, express or implied, is made as to its accuracy or completeness (other than disclosures relating to UBS). All information and opinions as well as any forecasts, estimates and market prices indicated are current as of the date of this report, and are subject to change without notice. Opinions expressed herein may differ or be contrary to those expressed by other business areas or divisions of UBS as a result of using different assumptions and/or criteria.

In no circumstances may this document or any of the information (including any forecast, value, index or other calculated amount ("Values")) be used for any of the following purposes (i) valuation or accounting purposes; (ii) to determine the amounts due or payable, the price or the value of any financial instrument or financial contract; or (iii) to measure the performance of any financial instrument including, without limitation, for the purpose of tracking the return or performance of any Value or of defining the asset allocation of portfolio or of computing performance fees. By receiving this document and the information you will be deemed to represent and warrant to UBS that you will not use this document or otherwise rely on any of the information for any of the above purposes. UBS and any of its directors or employees may be entitled at any time to hold long or short positions in investment instruments referred to herein, carry out transactions involving relevant investment instruments in the capacity of principal or agent, or provide any other services or have officers, who serve as directors, either to/for the issuer, the investment instrument itself or to/for any company commercially or financially affiliated to such issuers. At any time, investment decisions (including whether to buy, sell or hold securities) made by UBS and its employees may differ from or be contrary to the opinions expressed in UBS research publications. Some investments may not be readily realizable since the market in the securities is illiquid and therefore valuing the investment and identifying the risk to which you are exposed may be difficult to quantify. UBS relies on information barriers to control the flow of information contained in one or more areas within UBS, into other areas, units, divisions or affiliates of UBS. Futures and options trading is not suitable for every investor as there is a substantial risk of loss, and losses in excess of an initial investment may occur. Past performance of an investment is no guarantee for its future performance. Additional information will be made available upon request. Some investments may be subject to sudden and large falls in value and on realization you may receive back less than you invested or may be required to pay more. Changes in foreign exchange rates may have an adverse effect on the price, value or income of an investment. The analyst(s) responsible for the preparation of this report may interact with trading desk personnel, sales personnel and other constituencies for the purpose of gathering, synthesizing and interpreting market information.

Different areas, groups, and personnel within UBS Group may produce and distribute separate research products **independently of each other**. For example, research publications from **CIO** are produced by UBS Global Wealth Management. **UBS Global Research** is produced by UBS Investment Bank. **Credit Suisse Global CIO Office Research** is produced by Credit Suisse Wealth Management. **Credit Suisse Securities Research** is produced by Credit Suisse operating under its Securities Research function within the Investment Banking Division. **Research methodologies and rating systems of each separate research organization may differ**, for example, in terms of investment recommendations, investment horizon, model assumptions, and valuation methods. As a consequence, except for certain economic forecasts (for which UBS CIO and UBS Global Research may collaborate), investment recommendations, ratings, price targets, and valuations provided by each of the separate research organizations may be different, or inconsistent. You should refer to each relevant research product for the details as to their methodologies and rating system. Not all clients may have access to all products from every organization. Each research product is subject to the policies and procedures of the organization that produces it.

The compensation of the analyst(s) who prepared this report is determined exclusively by research management and senior management (not including investment banking). Analyst compensation is not based on investment banking, sales and trading or principal trading revenues, however, compensation may relate to the revenues of UBS Group as a whole, of which investment banking, sales and trading and principal trading are a part.

Tax treatment depends on the individual circumstances and may be subject to change in the future. UBS does not provide legal or tax advice and makes no representations as to the tax treatment of assets or the investment returns thereon both in general or with reference to specific client's circumstances and needs. We are of necessity unable to take into account the particular investment objectives, financial situation and needs of our individual clients and we would recommend that you take financial and/or tax advice as to the implications (including tax) of investing in any of the products mentioned herein.

This material may not be reproduced or copies circulated without prior authority of UBS. Unless otherwise agreed in writing UBS expressly prohibits the distribution and transfer of this material to third parties for any reason. UBS accepts no liability whatsoever for any claims or lawsuits from any third parties arising from the use or distribution of this material. This report is for distribution only

under such circumstances as may be permitted by applicable law. For information on the ways in which CIO manages conflicts and maintains independence of its investment views and publication offering, and research and rating methodologies, please visit www.ubs.com/research-methodology. Additional information on the relevant authors of this publication and other CIO publication(s) referenced in this report; and copies of any past reports on this topic; are available upon request from your client advisor.

Options and futures are not suitable for all investors, and trading in these instruments is considered risky and may be appropriate only for sophisticated investors. Prior to buying or selling an option, and for the complete risks relating to options, you must receive a copy of "Characteristics and Risks of Standardized Options". You may read the document at <https://www.theocc.com/about/publications/character-risks.jsp> or ask your financial advisor for a copy.

Investing in structured investments involves significant risks. For a detailed discussion of the risks involved in investing in any particular structured investment, you must read the relevant offering materials for that investment. Structured investments are unsecured obligations of a particular issuer with returns linked to the performance of an underlying asset. Depending on the terms of the investment, investors could lose all or a substantial portion of their investment based on the performance of the underlying asset. Investors could also lose their entire investment if the issuer becomes insolvent. UBS does not guarantee in any way the obligations or the financial condition of any issuer or the accuracy of any financial information provided by any issuer. Structured investments are not traditional investments and investing in a structured investment is not equivalent to investing directly in the underlying asset. Structured investments may have limited or no liquidity, and investors should be prepared to hold their investment to maturity. The return of structured investments may be limited by a maximum gain, participation rate or other feature. Structured investments may include call features and, if a structured investment is called early, investors would not earn any further return and may not be able to reinvest in similar investments with similar terms. Structured investments include costs and fees which are generally embedded in the price of the investment. The tax treatment of a structured investment may be complex and may differ from a direct investment in the underlying asset. UBS and its employees do not provide tax advice. Investors should consult their own tax advisor about their own tax situation before investing in any securities.

Important Information About Sustainable Investing Strategies: Sustainable investing strategies aim to consider and incorporate environmental, social and governance (ESG) factors into investment process and portfolio construction. Strategies across geographies and styles approach ESG analysis and incorporate the findings in a variety of ways. Incorporating ESG factors or Sustainable Investing considerations may inhibit the portfolio manager's ability to participate in certain investment opportunities that otherwise would be consistent with its investment objective and other principal investment strategies. The returns on a portfolio consisting primarily of sustainable investments may be lower or higher than portfolios where ESG factors, exclusions, or other sustainability issues are not considered by the portfolio manager, and the investment opportunities available to such portfolios may differ. Companies may not necessarily meet high performance standards on all aspects of ESG or sustainable investing issues; there is also no guarantee that any company will meet expectations in connection with corporate responsibility, sustainability, and/or impact performance.

External Asset Managers / External Financial Consultants: In case this research or publication is provided to an External Asset Manager or an External Financial Consultant, UBS expressly prohibits that it is redistributed by the External Asset Manager or the External Financial Consultant and is made available to their clients and/or third parties.

USA: Distributed to US persons by UBS Financial Services Inc. or UBS Securities LLC, subsidiaries of UBS AG. UBS Switzerland AG, UBS Europe SE, UBS Bank, S.A., UBS Brasil Administradora de Valores Mobiliarios Ltda, UBS Asesores Mexico, S.A. de C.V., UBS SuMi TRUST Wealth Management Co., Ltd., UBS Wealth Management Israel Ltd and UBS Menkul Degerler AS are affiliates of UBS AG. **UBS Financial Services Inc. accepts responsibility for the content of a report prepared by a non-US affiliate when it distributes reports to US persons. All transactions by a US person in the securities mentioned in this report should be effected through a US-registered broker dealer affiliated with UBS, and not through a non-US affiliate. The contents of this report have not been and will not be approved by any securities or investment authority in the United States or elsewhere. UBS Financial Services Inc. is not acting as a municipal advisor to any municipal entity or obligated person within the meaning of Section 15B of the Securities Exchange Act (the "Municipal Advisor Rule") and the opinions or views contained herein are not intended to be, and do not constitute, advice within the meaning of the Municipal Advisor Rule**

For country information, please visit ubs.com/cio-country-disclaimer-gr or ask your client advisor for the full disclaimer.

Version B/2023. CIO82652744

© UBS 2023. The key symbol and UBS are among the registered and unregistered trademarks of UBS. All rights reserved.