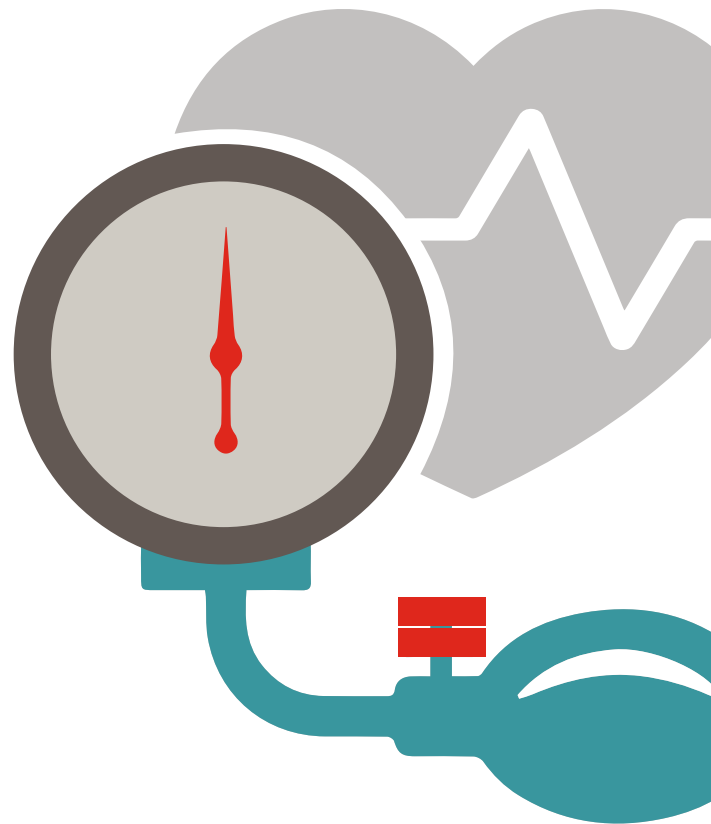




Take care of your health with support from UBS

Flu shots and biometric screenings



UBS cares about your well-being, which is why we're pleased to support key preventive health actions, like flu shots and biometric screenings. Both are offered at no cost to you and can be accessed in a variety of ways. This way, it's as easy as possible for you to stay on top of your health.

Get protected with a flu shot

Flu vaccinations are available at no cost to employees and covered dependents 18+ years of age (even if you aren't covered by a UBS-sponsored health plan).

HOW TO GET YOUR FREE FLU VACCINATION



OPTION 1

Visit a participating UBS Employee Health Center

We have arranged for the safe administration of free flu shots at UBS locations for the limited number of employees who have volunteered and been authorized to work in the office. These locations include UBS Employee Health Centers located in Weehawken, Nashville and New York.



OPTION 2


Visit a participating pharmacy

UBS is working with TotalWellness to provide flu shot vouchers for the 2021-2022 flu season. The vouchers below can be redeemed one time through January 31, 2022, for a no-cost quadrivalent flu shot at a participating pharmacy.

Access the full pharmacy list by visiting the US Benefits microsite: ubs.com/usbenefits. Use the Pharmacy search link to search for your preferred participating location by name and/or ZIP code; or you may call the TotalWellness Help Desk at +1-888-434 4358.

NOTES:

- Complete the pharmacy card below with Name and Employee GPN. If your spouse, domestic partner or dependent aged 18+ would like to participate, they must complete the Pharmacy Card using the Employee GPN with DP (dependent) numerically sequenced as needed (e.g., 12345678DP, 12345678DP1, 12345678DP2, etc.).
- Verify pharmacy hours and vaccine availability directly with your pharmacy. When redeeming your voucher, the pharmacy may require that you provide personal identifiable information, including but not limited to your name and birth date. For participation purposes, your name and GPN may be shared with UBS, indicating that you received a flu shot through the voucher program.
- Preservative-free vaccine is subject to availability; excludes intradermal and high-dose vaccinations.




Flu Shot Program Pharmacy Card

Name: _____

GPN: _____

Person Code: 00 RX BIN: 610011 PCN: IRX
RX Group: TWUBS2021 Expires 1/31/2022



Flu Shot Program Pharmacy Card

Name: _____

GPN: _____

Person Code: 00 RX BIN: 610011 PCN: IRX
RX Group: TWUBS2021 Expires 1/31/2022

PHARMACY NOTES: Enter the information exactly as it is presented on the card above. Don't forget to include the vaccine segment in your claim submission. If you have questions, contact the TotalWellness Help Desk **+1-888-434 4358**.

Know your numbers with a biometric screening

With biometric screenings, you and your doctor can get important health and wellness information that can help identify new health risks and issues or manage existing conditions.

HOW TO GET YOUR BIOMETRIC SCREENING



OPTION 1

Visit a Quest Diagnostics Patient Service Center

To make a screening appointment, visit: <https://my.questforhealth.com>.



OPTION 2

Visit your primary care physician

You may choose to receive your screening from your personal physician (as part of your annual wellness visit). Prior to your visit, download the "Physician Results Form" from the "Your Screening" section of the Quest website at <https://my.questforhealth.com>. Have your physician complete the form and fax it (844-560-5221) to Quest on or before December 31, 2021.



OPTION 3 NEW!

Order a home testing kit

To order your home test kit, go to: <https://www.ehealthscreenings.com/signup>

- Under the NOT YET REGISTERED? box, enter the Screening key: EPI36 and click Submit
- Enter your assigned default username and password and click on Verify My Account

USERNAME: First Initial Capitalized + Last Initial Capitalized + DOB (MMDDYYYY)
(example: John Smith born 4/23/1975 is **JS04231975**)

PASSWORD: Last Name + Last 4 SSN (example: John Smith with social 123456789 is **Smith6789**) *Username and Password are case sensitive

Follow the onscreen instructions to complete the order. You will receive a confirmation email with instructions and further details. **If you need assistance, please call Premise-EHS Customer Service at +1-888-708 8807, ext. 1, Mon - Fri 7:00am - 6:00pm CST.**

If you're registering for the first time on the Quest website (<https://my.questforhealth.com>), use code UBS2021 as the registration key and your GPN as the unique identifier.

(Example: Employee: GPN (Ex: 12345678), Spouse: Employee GPN+SP (Ex: 12345678SP), Domestic Partner: Employee GPN+DP (Ex:12345678DP)).

All benefits-eligible employees have access to their wellness portal and may participate in and complete the offered wellness incentives. If you (and/or your covered spouse/partner) are enrolled in a UBS medical plan, UBS will contribute \$125 into your 2022 HSA or HRA upon the completion of your biometric screening. Only employees enrolled in the CDHP medical plans and their enrolled spouse/partner are eligible to earn wellness incentives upon the successful completion of certain wellness activities. The maximum annual wellness incentive is \$400 for an individual or \$800 for a family.

The information in this material does not imply that participation in the plans or the benefit components thereunder is a guarantee of continued employment with UBS. It also does not imply or guarantee that the plans or the benefit components thereunder will exist or remain unchanged in the future. Nothing herein creates any vested or contractual rights. As in the past, and as set forth in the applicable plan documents, UBS continues to reserve the right to change or terminate the plans and the benefit components thereunder at any time in the future including, without limitation, changing coverage levels, deductibles, coinsurance, and/or your contributions for coverage. Summary Plan Descriptions (SPDs) are documents containing comprehensive descriptions of your benefit plans, including terms and conditions of participation. These documents can be found on the Your Benefits Resources™ website.