

UBS Connect

E-Banking for **financial intermediaries**

As an external asset manager, UBS Connect provides you with comprehensive e-banking services tailored to professional needs. A wide range of functions efficiently helps you manage your clients' portfolios.

Key benefits at a glance

- Access to current portfolio, custody account and account data
- Detailed monitoring of asset performance and asset analyses
- Ordering and retrieval of statements of assets
- Access to the main international financial and trading centers
- Efficient order processing, plus confirmation of execution and order status
- Direct access to comprehensive financial market and research data
- Access 24 hours a day, 7 days a week
- Option to securely exchange e-mails and documents with your UBS advisor in encrypted form

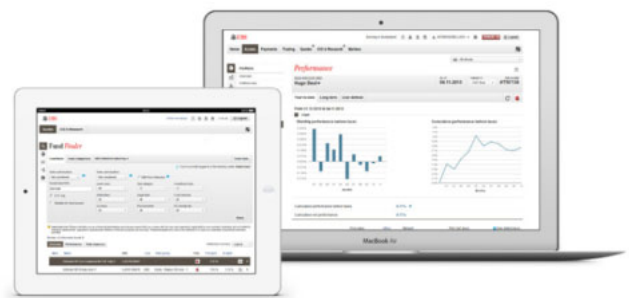
Risks and limitations

- All data transmitted via Internet are automatically encrypted. Nevertheless, specific manipulations of the IT system of the authorized user by unauthorized third parties cannot be excluded.
- The range of financial services offered to authorized users abroad may be subject to local legal restrictions.

Functions of UBS Connect

Client book

You can define client groups in order to clearly structure and efficiently edit your client book. This makes it possible to handle processes that you wish to repeat for several clients together in a single step. Client groups also help you optimize your operational organization, for instance representation arrangements.



Assets

The "Assets" area gives you a quick overview of the assets and liabilities of the banking relationships managed by you.

The assets are displayed by asset classes for each defined portfolio. It is also possible to call up data on investment structure, performance and future capital maturities – visually supported by informative charts. You also have direct access to the individual accounts and custody accounts including the relevant transactions and detailed positions.

If necessary, you can order and retrieve statements of assets online. The asset data shown in UBS Connect and in the statement of assets are identical, meaning that the information you receive online and on paper is identical.

Trading

Online links to the major international financial centers make it possible for you to process your orders instantly during official trading hours.

Financial intermediaries domiciled in Switzerland also have the option of subscribing to and managing fully assignable new issues (e.g. structured products and funds).

Under the menu item "Trading > Foreign Exchange" you can independently process and manage spot, forward and swap orders. The orders are executed in real time with binding pricing. The prerequisite for this is the existence of corresponding currency accounts and the Master agreement for derivatives trading and forward transactions.

Quotes

The UBS Quotes platform provides round-the-clock price information, as well as up-to-date news bulletins from the world's main financial centers. These bulletins plus numerous detailed key data are directly linked to each financial instrument.

Investment views

UBS Connect allows you to access the UBS Wealth Management Research offering. The research information is sorted by asset classes and is also accessible via a comprehensive search function. You can also subscribe to the research publications by e-mail.

Mailbox/E-documents

The E-documents service provides you with your bank documents in electronic form (PDF). These are available more quickly than by mail and enable you to optimize processes and save on costs. You can choose which documents you wish to receive in electronic form and which you wish to continue to receive in paper form.

You also have the option to securely exchange electronic messages and documents with your UBS advisor in encrypted form.

UBS Connect News

UBS Connect News provides you with an overview of all business communication and regulatory updates.

You can also access older messages thanks to automatic archiving. Important dates and deadlines are shown in the calendar view.

Security

UBS aims to provide you with the highest possible level of security when carrying out your banking transactions via the Internet.

A separate Access Card, which contains and also protects your access data, is always used to log in to UBS Connect. The Access Card can only be activated with your personal PIN. This means that even if your device should fall into the wrong hands, no one will be able to access your account without your personal card and the associated PIN.

What's more, the Access Card is protected against electronic manipulation, as it is not connected to your computer or tablet. Viruses, malware or Trojans can therefore not reach the Access Card.

To ensure optimal security, it is important that you protect your own computer and comply with security recommendations: ubs.com/security > Security recommendations

System requirements

UBS Connect does not have to be installed on your computer. For security reasons you should only use the operating system and browser versions specified online at ubs.com/support under "Requirements", and should keep these up-to-date by always installing the latest security updates.

Login

UBS Connect can be accessed online via ubs.com/connect.

Support

The UBS Connect Hotline is available on weekdays from 8 a.m. to 6 p.m. (CET):

- Switzerland: 0800 80 50 50
- International: +41 848 80 00 50

For further information, please contact your UBS advisor.

UBS Switzerland AG
P.O. Box
CH-8098 Zurich
ubs.com/online