



How to Invest in UBS Bloomberg CMCI

Quick reference for easy product access

Overview – Where Can I Find What Information?

	Fact sheets	Term sheets	ETCs	Other Products	Live Prices	Historic Prices
www.ubs.com/etc	✓	✓	✓			
www.ubs.com/quotes		✓	✓	✓	✓	✓
www.ubs.com/keyinvest	✓	✓	✓	✓	✓	
www.scoach.ch		✓	✓	✓	✓	✓
www.bloomberg.com			✓		✓	✓

Efficient Product Search

www.ubs.com/quotes

www.ubs.com/keyinvest

www.scoach.ch

www.bloomberg.com

General Search	Detailed Search	By SIX Symbol
<input type="text" value="CMCI"/> <input type="checkbox"/> Symbol Structured Products <input type="button" value="Search"/> <input type="button" value="Advanced"/>	<input type="text" value="CMCI Composite"/> <input type="checkbox"/> Symbol Structured Products <input type="button" value="Search"/> <input type="button" value="Advanced"/>	<input type="text" value="TCMCI"/> <input checked="" type="checkbox"/> Symbol Structured Products <input type="button" value="Search"/> <input type="button" value="Advanced"/>
Quick Search <input type="text" value="CMCI"/> <input type="button" value="Search"/>	Quick Search <input type="text" value="Composite"/> <input type="button" value="Search"/>	Quick Search <input type="text" value="TCMCI"/> <input type="button" value="Search"/>
Product search <input type="text" value="CMCI"/>	Product search <input type="text" value="CMCI Composite"/>	Product search <input type="text" value="TCMCI"/>
<input type="button" value="SYMBOL LOOKUP"/> → Find Symbol: <input type="text" value="ETC CMCI"/>		<input type="button" value="TCMCI:SW"/> <input type="button" value="QUOTE"/>

Trading and Execution

Trading hours

- **SIX-listed products:**
 Exchange trading hours: 09:15 - 17:15 CET
 Post exchange: 17:15 - 19:00 CET
- **All OTC products:** 09:15 - 19:00 CET

ETCs and other investment products mirror commodity futures markets – liquidity and tradability is determined by the related commodity futures exchanges. Most commodities are traded on US exchanges. Liquidity is therefore highest / spreads are tightest after 16:00 CET. Execution of large trades is best done when the related exchanges are open.

Execution alternatives

- **Risk Price**
 UBS continuously quotes firm bid / offer prices for a given size on the exchange. Risk prices for larger orders are available upon request.
- **Worked Order** – from USD 1mn on
 Investors can ask UBS to work an order. UBS will pass on the average execution and translate it into product price (no spread).
- **NAV End of Day Price** – from USD 1mn on
 Investors can ask for an execution based on the official market closing level (no spread). Orders need to be received in time.

Disclaimer: please refer to www.ubs.com/cmci. Issued by UBS AG and/or affiliates to institutional investors; not for private persons. This is a product of a sales or trading desk and not the Research Dept. UBS may trade as principal in instruments identified herein and may accumulate/ have accumulated a long or short position in instruments or derivatives thereof. UBS has policies designed to negate conflicts of interest. It is not an official confirmation of terms and is not a recommendation, offer or solicitation to buy or sell. It contains data derived from back-testing of data and is provided by UBS in good faith using our standard methodology for information of this kind. That methodology relies on proprietary models, empirical data, assumptions and such other information that we believe to be accurate and reasonable. However, no representation as to the accuracy, completeness or appropriateness is given and we accept no liability for your use of the information. There is no assurance that other parties would derive the same results for the back-test period and you should be aware that past performance is not necessarily illustrative of future performance. Additional information will be made available upon request. UBS assumes sole responsibility for this marketing material, which has not been reviewed by Bloomberg.

Web: www.ubs.com/cmci

Bloomberg: [CMCN <GO>](#)

Peter Guntlin CFA
peter.guntlin@ubs.com
 +41-44 239 77 40

Marco Jeker
marco.jeker@ubs.com
 +41-44 239 68 00

Patrick Stettler
patrick.stettler@ubs.com
 +41-44 239 77 60

Beat Frühauf
beat.fruehauf@ubs.com
 +41-44 239 14 66

Claudio Rossi
claudio-a.rossi@ubs.com
 +41-44 239 77 40

Eliane Rieder
eliane.rieder@ubs.com
 +41-44 239 68 00

Andy Lämmli
andreas.laemmler@ubs.com
 +41-44 23 9 77 60

Daniel Mathys
daniel.mathys@ubs.com
 +41-44 239 14 66

Daniele Giuliano
daniele.giuliano@ubs.com
 +41-44 239 77 40

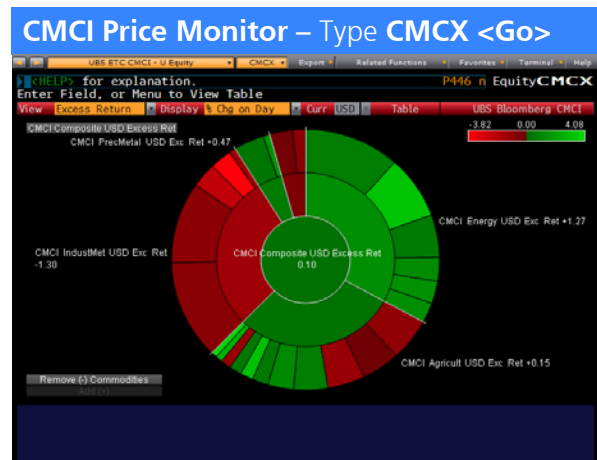
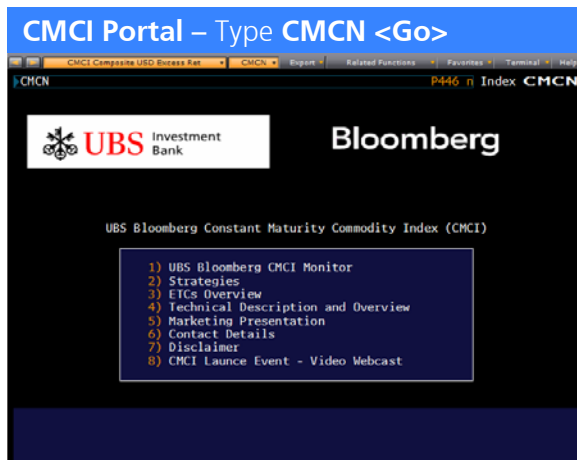
Chris Ruckstuhl
chris.ruckstuhl@ubs.com
 +41-44 239 68 00

Robin Lemann
robin.lemann@ubs.com
 +41-44 23 9 77 60

Sebastian Rieder
sebastian.rieder@ubs.com
 +41-44 239 14 66

How to Invest in UBS Bloomberg CMCI

Functions on Bloomberg



Search for ETCs (Example) – Type ETC Platinum <Help>, go to Funds



ETC Quick Search (Requires Bloomberg Autocomplete)



Other Information about Commodities

- GLCO <Go>** - Overview Commodities
- CCRV <Go>** - Commodity Futures Curves
- COSY <Go>** - Commodities Studies
- OPCB <Go>** - Crude Oil Supply & Demand

- DOE <Go>** - U.S. Department of Energy
- CPF <Go>** - Commodity Price Forecast
- CLA Comdty CT <Go>** – Contract table for WTI Crude Oil futures (Example).

Disclaimer: please refer to www.ubs.com/cmci. Issued by UBS AG and/or affiliates to institutional investors; not for private persons. This is a product of a sales or trading desk and not the Research Dept. UBS may trade as principal in instruments identified herein and may accumulate/have accumulated a long or short position in instruments or derivatives thereof. UBS has policies designed to negate conflicts of interest. It is not an official confirmation of terms and is not a recommendation, offer or solicitation to buy or sell. It contains data derived from back-testing of data and is provided by UBS in good faith using our standard methodology for information of this kind. That methodology relies on proprietary models, empirical data, assumptions and such other information that we believe to be accurate and reasonable. However, no representation as to the accuracy, completeness or appropriateness is given and we accept no liability for your use of the information. There is no assurance that other parties would derive the same results for the back-test period and you should be aware that past performance is not necessarily illustrative of future performance. Additional information will be made available upon request. UBS assumes sole responsibility for this marketing material, which has not been reviewed by Bloomberg.

Web: www.ubs.com/cmci

Bloomberg: [CMCN <Go>](#)

Peter Guntlin CFA
peter.guntlin@ubs.com
 +41-44 239 77 40

Marco Jeker
marco.jeker@ubs.com
 +41-44 239 68 00

Patrick Stettler
patrick.stettler@ubs.com
 +41-44 239 77 60

Beat Frühauf
beat.fruehauf@ubs.com
 +41-44 239 14 66

Claudio Rossi
claudio-a.rossi@ubs.com
 +41-44 239 77 40

Eliane Rieder
eliane.rieder@ubs.com
 +41-44 239 68 00

Andy Lämmli
andreas.laemmler@ubs.com
 +41-44 23 9 77 60

Daniel Mathys
daniel.mathys@ubs.com
 +41-44 239 14 66

Daniele Giuliano
daniele.giuliano@ubs.com
 +41-44 239 77 40

Chris Ruckstuhl
chris.ruckstuhl@ubs.com
 +41-44 239 68 00

Robin Lemann
robin.lemann@ubs.com
 +41-44 23 9 77 60

Sebastian Rieder
sebastian.rieder@ubs.com
 +41-44 239 14 66