



In UBS Bloomberg CMCI Investieren

Kurzreferenz für einfache Preis- und Informationsbeschaffung

Übersicht – Wo Kann Ich Welche Information Finden?

	Fact-sheets	Term-sheets	ETCs	Andere Produkte	Live-Preise	Historische Preise
www.ubs.com/etc	✓	✓	✓			
www.ubs.com/quotes		✓	✓	✓	✓	✓
www.ubs.com/keyinvest	✓	✓	✓	✓	✓	
www.scoach.ch		✓	✓	✓	✓	✓
www.bloomberg.com			✓		✓	✓

Effiziente Produktsuche

	Allgemeine Suche	Detailsuche	Nach SIX-Symbol
www.ubs.com/quotes	Strukturierte Produkte CMCI <input type="checkbox"/> Symbol Suchen Erweitert	Strukturierte Produkte CMCI Composite <input type="checkbox"/> Symbol Suchen Erweitert	Strukturierte Produkte TCMCI <input checked="" type="checkbox"/> Symbol Suchen Erweitert
www.ubs.com/keyinvest	Schnellsuche CMCI Go	Schnellsuche CMCI Composite Go	Schnellsuche TCMCI Go
www.scoach.ch	Basiswertsuche CMCI ▶	Basiswertsuche CMCI Composite ▶	Produktsuche TCMCI ▶
www.bloomberg.com	Find Symbol: ETC CMCI		TCMCI:SW QUOTE

Handel und Ausführung

Handelszeiten

- **SIX-kotierte Produkte:**
Offizielle Handelszeiten: 09:15 - 17:15 CET
Post exchange: 17:15 - 19:00 CET
- **Alle OTC-Produkte:** 09:15 - 19:00 CET

ETCs und andere auf CMCI basierte Produkte spiegeln Rohstoffterminmärkte – Liquidität und Handelbarkeit entspricht derjenigen des entsprechenden Terminmarktes. Die meisten Rohstoffe werden an US-Börsen gehandelt. Liquidität ist am höchsten / Spreads am tiefsten nach 16:00 CET. Grosse Transaktionen können am effizientesten ausgeführt werden, wenn die Märkte offen sind.

Ausführungsalternativen

- **Risikopreis**
An der Börse kontribuiert UBS kontinuierlich Geld/Brief-Preise für eine fixe Menge. (für grössere Transaktionen sind auf Anfrage)
- **Worked Order – ab USD 1mn**
Auftrag an UBS eine Transaktion an den Terminmärkten auszuführen. Der realisierte Indexpreis wird danach in den Produktpreis umgerechnet. (kein Spread).
- **NAV End of Day Price – ab USD 1mn**
Worked Order auf den offiziellen Indexschusspreis. Aufträge müssen rechtzeitig gegeben werden.

Disclaimer: please refer to www.ubs.com/cmci. Issued by UBS AG and/or affiliates to institutional investors, not for private persons. This is a product of a sales or trading desk and not the Research Dept. UBS may trade as principal in instruments identified herein and may accumulate/ have accumulated a long or short position in instruments or derivatives thereof. UBS has policies designed to negate conflicts of interest. It is not an official confirmation of terms and is not a recommendation, offer or solicitation to buy or sell. It contains data derived from back-testing of data and is provided by UBS in good faith using our standard methodology for information of this kind. That methodology relies on proprietary models, empirical data, assumptions and such other information that we believe to be accurate and reasonable. However, no representation as to the accuracy, completeness or appropriateness is given and we accept no liability for your use of the information. There is no assurance that other parties would derive the same results for the back-test period and you should be aware that past performance is not necessarily illustrative of future performance. Additional information will be made available upon request. UBS assumes sole responsibility for this marketing material, which has not been reviewed by Bloomberg.

Web: www.ubs.com/cmci

Bloomberg: [CMCN <GO>](https://www.bloomberg.com/quote/CMCN)

Switzerland: Fabian Schlederer
fabian.schlederer@ubs.com
+41-44 239 77 40

Germany: Lars Reichel
lars.reichel@ubs.com
+49 69 1369 7325

Scandinavia: Klas Hellmann
klas.hellmann@ubs.com
+46 845 37391

South Europe: Sabina Belussi
sabina.belussi@ubs.com
+44 20 7568 4742

France, Benelux: Thierry Leflon
thierry.leflon@ubs.com
+33 1 4888 3039

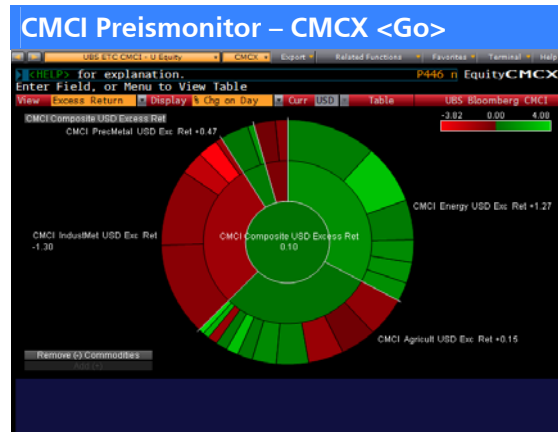
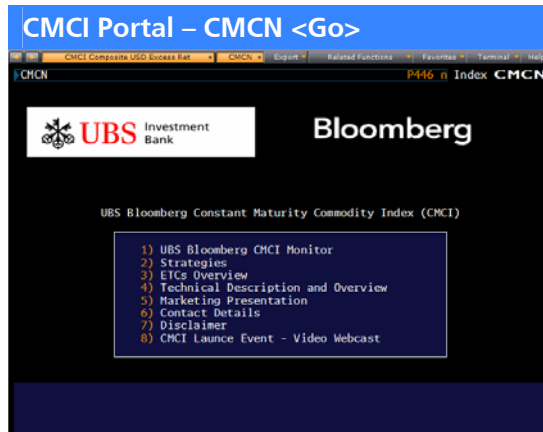
US: Nelson Louie
nelson.louie@ubs.com
+1 203 719 3904

Japan: Hirofumi Takaku
hirofumi.takaku@ubs.com
+81 35208 7851

Asia: Tommie Fang
tomas.fang@ubs.com
+852 297 16182

In UBS Bloomberg CMCI Investieren

Bloomberg-Funktionen



ETC-Suche (Beispiel) – ETC Platinum <Help>, danach Funds

Bloomberg Search

Funds **ETC PLATINUM** Search Results 1-3 of 3

- 1) UBS ETC Platinum - CHF (CPLCI SW)**
UBS ETC Platinum is an open-end Exchange Traded Commodity. The ETC is designed to track the UBS Bloomberg CMCI Hedged Platinum CHF Total Return Index, which provides access to the Platinum commodity market in Swiss Francs.
- 2) UBS ETC Platinum - EUR (EPLCI SW)**
UBS ETC Platinum is an open-end Exchange Traded Commodity. The ETC is designed to track the UBS Bloomberg CMCI Hedged Copper EUR Total Return Index, which provides access to the Platinum commodity market in Euro.

ETC Kurzsuche (benötigt Bloomberg Autocomplete)

CMCI Composite USD Excess Ret GP Export Related Functions Favorites Terminal Help

ETC AGRIC Index GP

Up arrow to hide results

SECURITIES	Index
CAGCI SW Equity	UBS ETC Agriculture - CHF (Switzerland)
TAGCI SW Equity	UBS ETC Agriculture - USD (Switzerland)
EAGCI SW Equity	UBS ETC Agriculture - EUR (Switzerland)

Page 1/7

Avgs [] [] []

Events []

Period/Range [] Events []

Andere Nützliche Informationen

- GLCO <Go>** - Rohstoffportal
- CCRV <Go>** - Rohstoffterminkurven
- COSY <Go>** - Rohstoffanalysen
- OPCB <Go>** - Rohöl Angebot & Nachfrage

- DOE <Go>** - US Energiedepartement
- CPF <Go>** - Rohstoffpreisprognosen
- CLA Comdty CT <Go>** – Kontraktabelle für WTI Rohölfutures (Beispiel).

Disclaimer: please refer to www.ubs.com/cmci. Issued by UBS AG and/or affiliates to institutional investors, not for private persons. This is a product of a sales or trading desk and not the Research Dept. UBS may trade as principal in instruments identified herein and may accumulate/ have accumulated a long or short position in instruments or derivatives thereof. UBS has policies designed to negate conflicts of interest. It is not an official confirmation of terms and is not a recommendation, offer or solicitation to buy or sell. It contains data derived from back-testing of data and is provided by UBS in good faith using our standard methodology for information of this kind. That methodology relies on proprietary models, empirical data, assumptions and such other information that we believe to be accurate and reasonable. However, no representation as to the accuracy, completeness or appropriateness is given and we accept no liability for your use of the information. There is no assurance that other parties would derive the same results for the back-test period and you should be aware that past performance is not necessarily illustrative of future performance. Additional information will be made available upon request. UBS assumes sole responsibility for this marketing material, which has not been reviewed by Bloomberg.

Web: www.ubs.com/cmci

Bloomberg: [CMCN <Go>](#)

Switzerland: Fabian Schleder
fabian.schleder@ubs.com
+41-44 239 77 40

Germany: Lars Reichel
lars.reichel@ubs.com
+49 69 1369 7325

Scandinavia: Klas Hellmann
klas.hellmann@ubs.com
+46 845 37391

South Europe: Sabina Belussi
sabina.belussi@ubs.com
+44 20 7568 4742

France, Benelux: Thierry Leflon
thierry.leflon@ubs.com
+33 1 4888 3039

US: Nelson Louie
nelson.louie@ubs.com
+1 203 719 3904

Japan: Hirofumi Takaku
hirofumi.takaku@ubs.com
+81 35208 7851

Asia: Tommie Fang
tomas.fang@ubs.com
+852 297 16182